

Electrical Energy Production and Consumption increase in 2020

The total electrical energy production increased by 0.77% in 2020 with quantity of production that reached 338,031 GWh compared to 335,445 GWh in 2019.

Electrical energy consumption also increased by 0.21% during 2020 to reach 289,333 GWh, compared to 2019 when consumption was 288,713 GWh.

Saudi Electricity Company's produces 54.24% of total Electrical Energy Production

- In 2020, 54.24% of electricity was produced by the Saudi Electricity Company's generating plants. The production of electricity by steam units reached 45.41% of the Saudi Electricity Company's total production, followed by combined cycle units by 31.68% and 22% for gas units.
- The percentage of electricity produced from desalination plants in the Kingdom was 40.59% in 2020.
- The percentage of electricity produced from other plants was 5.17%.

Per Capita and Subscriber Share of Electrical Energy Sold decrease in 2020

- The per capita share of electrical energy sold in 2020 decreased by 2.02%, reaching 8,263 KWh, compared to 8,434 KWh in 2019.
- The subscriber share recorded a significant decrease by 3.38% in 2020 to 28,527 KWh, compared to 29,526 KWh in 2019.

Peak Load and Available Capacity increase in 2020

- The year 2020 recorded a slight increase in the peak load by 0.31%, as it increased from about 62,076 megawatts in 2019 to about 62,266 megawatts in 2020.
- The available capacity in 2020 also increased significantly by 4.31%, reaching 79,667 megawatts compared to 76,376 megawatts in 2019.

Electrical Energy consumed by Region and Sector in 2020

- The total electrical energy consumed in 2020 in the Kingdom of Saudi Arabia reached 289,333 GWh. The western region accounted for the largest share of 89,605 GWh, representing 30.97% of the total electrical energy consumed. It is followed by the central region with 86,422 GWh, representing 29.87% of the total electrical energy consumed. Followed by the eastern region with 83,002 GWh, representing 28.69% of the total electrical energy consumed. The lowest consumption was for the southern region, with 30,303 GWh, representing 10.47% of the total electrical energy consumed.
- As for the distribution of consumption over the various sectors. The residential sector consumption in 2020 accounted for 47.58% of the total electrical energy consumption, followed by the industrial sector by 20.0%, then the commercial sector by 14.2%, then the government sector by 12.51%, and finally the other sectors by 5.7%.

Methodology

The electrical energy statistics publication depends on the administrative records data from its primary sources from relevant government entities that provide GASTAT with data; and accordingly, the electrical energy statistics publication is issued.

Electrical Energy Statistics Indicators for 2019 and 2020

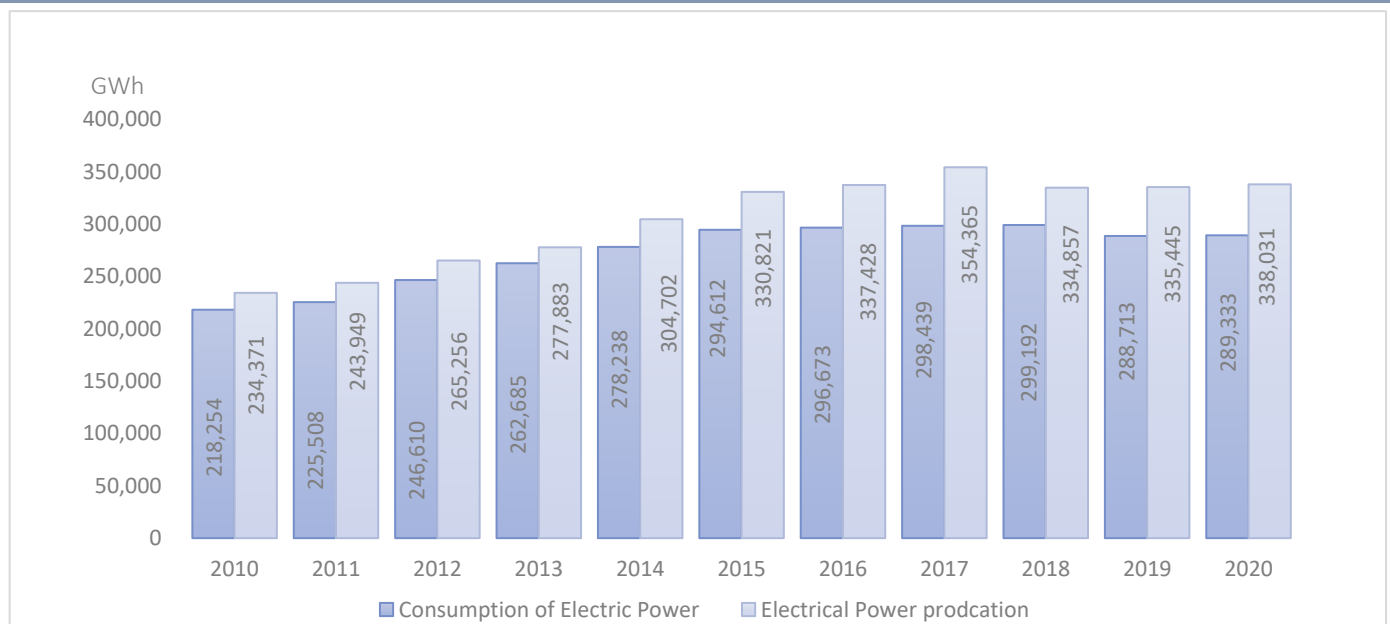
Indicator	Unit	Year	
		2019	2020
The total licensed capacity of electricity according to the technology used.	GW	85	90
Fuel consumption for electricity production (single-purpose).	Trillion Btu	2,259	2,192
Total electrical energy consumption.	GWh	288,713	289,333
Electricity import.	GWh	337	464
Electricity export.	GWh	33	832
Produced electricity.	GWh	335,445	338,031
Available power generating capacity.	Megawatts	76,376	79,667
Peak load.	Megawatts	62,076	62,266

Electrical Energy Statistics Indicators for 2019 and 2020

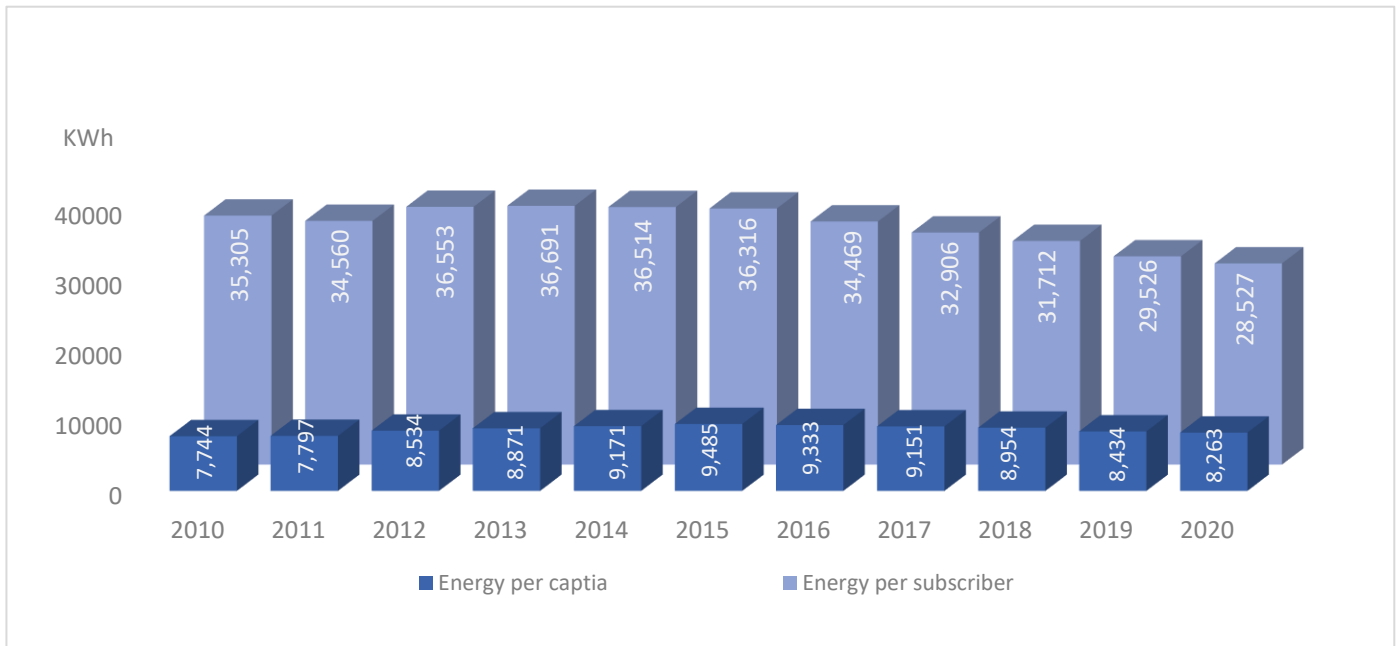
Indicator	Unit	Year	
		2019	2020
The total electrical energy produced from The Saudi Electricity Company's generating plants.	GWh	192,877	183,347
The total electrical energy produced by desalination plants for licensed companies, including the Saline Water Conversion Corporation.	GWh	134,414	137,199
Per capita share of electrical energy sold.	KWh	8,434	8,263
Subscriber share of electrical energy sold.	KWh	29,526	28,527

Source: Water and Electricity Regulatory Authority

Production and consumption of electrical energy from 2010 to 2020



Per Capita and Subscriber Share of Electrical Energy Sold from 2010 to 2020



Links: [Tables](#) , [Methodology](#)