



المملكة العربية السعودية  
مصلحة الإحصاءات العامة والمعلومات

# مسح إنفاق ودخل الأسرة

١٤٣٤هـ - (٢٠١٣)

HOUSEHOLD EXPENDITURE  
AND INCOME SURVEY

1434 H. (2013)





## Table of Contents

Serial	Subject	Page No.
1	Table of Contents	7
2	Analytic tables index	8
3	Detailed tables index	9
4	Charts index	10
5	Introduction	11
6	Survey Objectives	12
7	Survey implementation period	12
8	Survey data reference period	12
9	Glossary of Terms	14
10	Sample design	17
11	Survey form	19
12	Data collection method	21
13	Household expenditure data recording rules	22
14	Household data completion and recording methods	23
15	Survey findings summary	24
16	Tables	35
17	Charts	74-76



## Analytic Tables Index

Table NO.	Title	Page No.
1	Key household and individual expenditure and income indicators of 2013 compared to 2007	25
2	Household monthly expenditure average and relative distribution by main expenditure group	26
3	Household monthly expenditure average and size average by administrative region	27
4	Household monthly consumer expenditure average and size average by administrative region	28
5	Household monthly income average and size average by administrative region	29
6	monthly expenditure average Per capita and relative distribution by main expenditure group	30
7	The evolution of per capita expenditure relative distribution by main expenditure group over the period 2007-2013	31
8	Per capita monthly expenditure average by administrative region	32
9	Per capita monthly income average by administrative region	33



<b>Table NO.</b>	<b>Detailed Tables Index</b>	<b>Page No.</b>
1	Population by administrative region and gender	36
2	Families by administrative region and nationality and gender of head of the household	37
3	Household monthly expenditure average by main expenditure group and nationality and gender of head of the household	38
4	Household monthly expenditure average by main expenditure group in Riyadh Region	39
5	Household monthly expenditure average by main expenditure group in Makkah Region	40
6	Household monthly expenditure average by main expenditure group in Madinah Region	41
7	Household monthly expenditure average by main expenditure group in Qassim Region	42
8	Household monthly expenditure average by main expenditure group in Eastern Region	43
9	Household monthly expenditure average by main expenditure group in Asir Region	44
10	Household monthly expenditure average by main expenditure group in Tabouk Region	45
11	Household monthly expenditure average by main expenditure group in Hail Region	46
12	Household monthly expenditure average by main expenditure group in Northern Border Region	47
13	Household monthly expenditure average by main expenditure group in Jizan Region	48
14	Household monthly expenditure average by main expenditure group in Najran Region	49
15	Household monthly expenditure average by main expenditure group in Baha Region	50
16	Household monthly expenditure average by main expenditure group in Al-Jouf Region	51
17	Household monthly expenditure average by main expenditure group in Najran Region	52
18	Household monthly expenditure average by expenditure group	57
19	Household monthly expenditure average by main expenditure group and housing type	62

Table NO.	Title	Page No.
20	Saudi household monthly expenditure average by main expenditure group and housing area	63
21	Saudi household monthly expenditure average by main expenditure group and housing construction material	64
22	Household monthly expenditure average by main expenditure group and house possession type	65
23	Saudi household monthly expenditure average by main expenditure group and household size	66
24	Saudi household monthly expenditure average by main expenditure group and head of the household age	67
25	Saudi and non-Saudi household monthly expenditure average by main expenditure group and age of the household head	68
26	Saudi household monthly expenditure average by main expenditure group and head of the household marital status	69
27	Saudi household monthly expenditure average by main expenditure group and head of the household education standard	70
28	Saudi and non-Saudi household monthly expenditure average by main expenditure group and head of the household education standard	71
29	Saudi household monthly expenditure average by main expenditure group and monthly expenditure category	72
30	Saudi and non-Saudi household monthly expenditure average by main expenditure group and monthly expenditure category	73

## Charts Index

Chart NO.	Title	Page No.
1	Saudi household consumer expenditure average and monthly income average	74
2	Gini coefficient for Saudi household monthly expenditure by main administrative region	74
3	Saudi household monthly expenditure average by main expenditure group	75
4	Saudi and non-Saudi household monthly expenditure average by main expenditure group	75
5	Saudi household monthly expenditure average by main expenditure group	76
6	Saudi household monthly consumer expenditure average and income by administrative region	76



## Introduction

The General Authority for Statistics (GAS) is pleased to provide beneficiaries and users of statistical data with this bulletin which includes the results of household expenditure and income survey of 1434 AH (2013).

Household expenditure and income survey aims to identify patterns of expenditure in the community and the impact of demographic, social, economic and other factors on them. The outcomes of household expenditure and income survey are considered the basis of providing the relative weights which indicate the relative importance of the terms of the consumer expenditure and use them in the calculation of the consumer price indexes. Besides, it is one of the most important sources of the data needed for compiling national accounts. That is because the household expenditure on commodities and services is considered the largest component composing the final expenditure in the GDP.

In this survey, to classify the main expenditure groups, commodities and services, Classification of Individual Consumption by Purpose Groups (COICOP), issued by the United Nations Statistics Division, was used.

Moreover, it was taken into account that the results of this survey reflect the expenditure of Saudi and non-Saudi families on consumer goods such as food, beverages, and clothing, as well as non-consumer goods such as financial transfers, and capital goods such as: purchase of buildings, lands and shares, in addition to donations, etc.

On this occasion, the General Authority for Statistics extends special thanks to heads of the families included in the survey sample whose cooperation, after the guidance of Allah, has proven indispensable for completion of this work.



## Survey Objectives

Household expenditure and income survey is one of the basic surveys that help study social and economic levels of families, and measure the community welfare. Household expenditure and income patterns give an accurate perception of the living standards of the study community.

**Household expenditure and income survey has several objectives, most important of which are:**

- 1- To know the relative distribution of expenditure on commodities and services to be used in composing the cost of living index (consumer prices);
- 2- To measure consumer expenditure elasticity, through which to determine the amount of relative change in expenditure on commodities and services relating to each relative change in income, and to take advantage of it for planning purposes so as to meet the expected demand on such commodities and services in the future;
- 3- To study the relationship between population and housing characteristics of the families and their income, as well as studying the relationship between household expenditure and income;
- 4 -To get estimates on household expenditure to contribute to compiling the national accounts;  
and
- 5 - To identify the amount of current transfers of the household sector.

### Survey Duration:

The survey implementation was carried out in a time span of thirteen months, from Zul-Qa'dah 1434 AH to Zul-Qa'dah 1435 AH (corresponding to September 15th 2012, to October 5th 2013). The first month was an experimental one, to check data quality and accuracy.

Each month is dedicated to a different sample of families, so as to measure the change in expenditure patterns and levels as a result of seasonal, temporary, and periodical changes.

### Survey Data Reference Period

Following are the three reference periods of survey data:

- 1- The population and housing data (Sections I and II of the form) were referred to the visit day, on which the household was examined, except the individual's economic status and profession,



which were referred to the week preceding the survey month in which the household was examined.

- 2- Data of the daily expenditure (Section V) and monthly expenditure (Section VI) were referred to the survey month in which the household was examined.
- 3- Data of the durable goods (Section VII) and income (Section VIII) were referred to the year that ends by the end of the survey month in which the household was examined.





## Glossary of Terms

### Administrative region

KSA comprises thirteen administrative regions, each supervised by a governmental organ affiliated to the Ministry of Interior. In each administrative region, there is a metropolis city where the region's headquarter is based.

### Preliminary Sampling Unit:

It is a statistical division consisting of a definite geographical area containing a number of buildings, housing units, and families, at an average of 150 families, and it is called the counting area.

### Household:

It is an individual or a group of individuals sharing the same housing unit and food; with or without kinship binding them to one another. Servants, drivers and the like are considered household members, if they live in the same housing unit. Nonetheless, individuals living at lodging houses, such as hotels, and individuals of large workers' settlements, amounting to 3.8% of total population, are not considered household members.

### Head of the household:

It refers to the person regarded by the household members as its chief member. Usually, he is responsible for taking decisions of household affairs and his age must not be under 15 years old. If the household consists of children and their mother, and they are cared for by a relative who does not live with them, such a relative shall not be considered head of the household. Nor shall he be counted as one of its members. In this case, the mother shall be considered the head of the household.

### Expenditure:

It is the aggregate amount spent by all household members during the reference period, in return for commodities and services (consumer or non-consumer). This expenditure could relate to the



household as a whole (such as expenditure on food, housing, electricity, or durable goods), and it could be individual expenditure of the household members (such as expenditure on clothing, personal belongings, and so on.)

The groups of expenditure on commodities and services consist of twelve main groups. Each group consists of sub groups covering several commodities and services. Main expenditure groups (sections) are :

<b>1-Food and Beverages Group:</b> It consists of two sub-groups, namely:	
-Food sub-group	-Beverages sub-group
<b>2-Tobacco Group:</b>	
<b>3-Garments and Footwear Group:</b> It consists of two sub-groups, namely:	
-Garments sub-group	-Footwear sub-group
<b>4-Housing, Water, Electricity, Gas, and other Fuels Group:</b> It consists of (5) sub-groups, namely:	
-Housing paid rent sub-group	-Housing estimated rent sub-group
-Housing repair and maintenance sub-group	-Water and dwelling related services sub-group
Electricity, gas, and other fuels sub-group	
<b>5-Dwelling Furnishing and Equipping:</b> It consists of 6 sub-groups, namely:	
-Furniture, carpets and floor coverings sub-group	-Home textiles sub-group
-Dwelling equipping sub-group	-Home utensils and tableware sub-group
-Dwelling and garden utensils and equipment sub-group	Commodities and services for dwelling maintenance sub-group
<b>6-Health Group:</b> It consists of 3 sub-groups, namely:	
- Medical products, equipment and supplies sub-group	- Patient services sub-group
- Hospital services sub-group	
<b>7-Transport Group:</b> It consists of 3 sub-groups, namely:	
- Vehicle purchases sub-group	- Personal transport equipment operation sub-group
- Transport services sub-group	
<b>8-Telecommunications Group:</b> It consists of 3 sub-groups, namely:	
- Mail services sub-group	- Communication devices sub-group
- Telephone and fax sub-group	



**9-Entertainment and Culture Group:** It consists of (6) sub-groups, namely:

- |   |  |
|---|--|
| Audio, photography, and information devices group                       | -Other main durable goods prepared for entertainment and culture sub-group |
| -Other entertainment equipment and objects, gardens, and pets sub-group | -Entertainment and culture services sub-group                              |
| - Books, newspapers and stationery services sub-group                   | - Vacations and tourism offers sub-group                                   |

**10-Education Group:** It consists of 5 sub-groups, namely:

- |   |  |
|---|--|
| - Preschool and primary education sub-group         | - Intermediate and secondary education group |
| - Post-secondary non-university education sub-group | - Higher education sub-group                 |
| - Undefined education level sub-group               |  |

**11-Restaurants and Hotels Services:** It consists of two sub-groups, namely:

- Group catering services
- Services range hotels and furnished apartments

**12-Miscellaneous Personal Commodities and Services Group:** It consists of 6 sub-groups, namely:

- |   |  |
|---|--|
| - Personal care sub-group                               | - Personal belongings not elsewhere classified sub-group |
| - Social services sub-group                             | - Insurance sub-group                                    |
| - Financial services not elsewhere classified sub-group | - Other services not elsewhere classified sub-group      |

## Income:

It is the total cash and in kind income; the sum of the incomes of male and female household members (regardless of their age), which is available to the household to be spent on different aspects, or to be saved. There are several sources for the income, namely:

- 1- Salaries and wages (cash or in-kind)
- 2- Real estate property rent
- 3- Enterprise net income
- 4- Property income
- 5- Current transfers
- 6- Other sources of income

## Notes:

- Values and averages in S.R.
- (-) means there is no data.
- (0) means the value is equal or near to zero.



## Sample Design

The survey sample is based on the framework of population and housing census of 1431 AH.

The household expenditure and income survey sample was designed to realize the main objectives of the survey throughout the Kingdom and its administrative regions. It takes into account the special requirements to determine the items of consumer goods and services for future record of the cost of living, as well as the data needed for national accounts.

To get highly efficient and effective estimates, research community was divided into parts that are non-overlapping and characterized by relative consistency in their units. Each part is considered a category, and each category is dealt with as an independent community. A random sample is drawn from each category independently, and eventually all drawn units are integrated to form the total sample. For the purposes of preparing this framework, each administrative region has been divided into a number of categories ranging between 3-7 layers determined by the population size, bringing the total to fifty-four categories Kingdom-wide. The optimum size of the main sample that fulfills the purposes of surveys and different household researches conducted by the Authority all over the Kingdom and the administrative regions was identified. After that, primary sampling units of the main sample were drawn, represented in statistical areas that amounted to 1704 statistical areas distributed over all administrative regions. Before drawing the primary sampling units (counting areas) of the main sample, small or remote counting areas were merged, to be replaced in the framework by similar counting areas to guarantee proper representation of those categories and to get accurate estimates and results that represent all categories.

### Survey Sample Design and Selection

Before designing the survey sample and choosing the appropriate method, the aspired objectives for the present household expenditure and income survey, the previous survey sample of 2007, and its outcomes were examined and discussed. Besides, standard deviation and variation coefficient of some of the main variables in the previous survey, such as the average household expenditure all over the administrative regions, were analyzed. In the light of that, the size of the



survey sample has been estimated. The selected sample is a random categorical cluster sample, selected through two stages, in accordance with the following:

### First Stage

After determining the optimum size of the survey sample of families of each administrative region, there begins the drawing of the primary sampling units, i.e. counting areas, from the main sample framework. A number of 1704 statistical areas, out of 36196 statistical areas, within the framework of the Population and Housing General Census 1431 H was drawn. They are distributed among all categories in all administrative regions using the method that is commensurate with the size, considering the number of Saudi families in them, distributed to the administrative regions .

### Second Phase

The final sampling units (families) were randomly drawn from the selected counting areas in the first stage using the regular random sample method. A number of (12) families from each counting area were chosen, totaling (20448) families all over KSA. In addition to that, an alternative sample consisting of (8) families in each counting area was chosen to reduce the non-responding percentage.

### Response percentage:

Total number of sample families visited by the researchers reached (20448) Saudi and non-Saudi families. Number of families that responded positively and accepted to provide data amounted to (19919) Saudi and non-Saudi families, at a percentage of (97.4%) of total number of visited families.



## Survey Form

Survey form consists of seven sections, namely :

### **Section I: The form cover**

This section includes geographical data of the counting area and household identifying data.

### **Section II: Housing characteristics**

This section includes a number of question relating to the basic characteristics of the housing unit inhabited by the household.

### **Section III: Demographic characteristics**

This section includes the demographic, social and economic data of the household members.

### **Section IV: General questions & Household usual place for shopping**

This section comprises general questions and household usual place for shopping.

### **Section V: Daily expenditure**

This section focuses on the group of food, beverages, tobacco, and other commodities and services belonging to the daily consumption of the household.

### **Section VI: Monthly expenditure**

This section includes items of expenditure on commodities and services belonging to the monthly expenditure. It consists of ten main groups. Each group is divided into sub-groups including several items for commodities and services. A page, or less or more, is dedicated to each group within the monthly supportive form, so that the researcher or the household may use this form to daily record the monthly expenditure of the household.

### **Section VII: Expenditure on durable goods**

This section consists of six sub- groups including some of the commodities and services belonging to the annual expenditure (durable goods and long-term services), namely:

- Durable home appliances
- Means of transport
- Audiovisual devices, photography and information equipment
- Main outdoor entertainment durable goods
- Musical instruments, and main in-door entertainment durable goods



## ■ Insurance

### Section VIII: Income

This section of the survey form is to be completed by household individuals who have income. Household income sources are classified as follows:

- 1- Salaries and cash and in-kind wages including overtime pay, allowances and rewards.
- 2- The income obtained by rents of real estate properties, including buildings and non-agricultural lands
- 3- The net income from projects in (commercial, industrial, agricultural and service establishments as well as free professions, and profit of stocks speculation, etc).

It is also the net income from projects outside the establishments, i.e. the business carried out outside the establishments and that has no fixed place for carrying out the business such as salesmen and taxis (transport, passengers, cargo, etc).

By net income is meant the total revenues (production), from which operation costs (salaries, wages, service, and raw materials) are deducted.

- 4- Property income: including distributed profits of stocks, shares, securities, investment certificates, distributed revenues, drawing out from quasi-corporations, agricultural lands rent, intellectual property income, interest on deposits and accrued bonds of any one of the household members during the survey year, whether from inside or outside KSA.
- 5- Income from current transfers, i.e. government aids (cash or in kind) charity establishments aids, aids from individuals and relatives (among families), pension remunerations, social insurance, insurance companies compensations, and other current transfers such as bridal money, alimony, inheritance, and awards of competitions, etc.
- 6- Other income sources, including;  
Income from families production (outside the establishments), sales of used commodities (durable ones), and assets sales (buildings, lands, and means of transport, etc)



## Data Collection Method

For collecting survey data, the direct method was adopted, through face-to-face interviews. The researcher, during the survey period (the survey month), pays several visits to the household, detailed as follows:

### 1. Identification Visit

During the five days preceding the survey month, the researcher registers the geographical and identifying data of the form (Section I) of the targeted families of the survey in his work area, and completes the housing characteristics (Section II), and demographic characteristics (Section III) of the form, as well as Section IV.

### 2. Follow-Up Visits

The researcher, during the four weeks of the month of the survey, visits the household at a rate of at least twice a week, according to the circumstances of the household, in order to make sure that the household records its daily expenditure in the assisting forms according to the instructions.

### 3. Giving and Receiving Sportive Forms

At the end of each week during the month of the survey, the researcher visits the household, receives the completed daily and monthly supportive forms, and gives the household a new daily form for the following week, with reviewing the monthly supportive form and making sure that the household records its monthly expenditure in this record according to the instructions. The researcher continues in the same way until the end of the survey month.

### 4. Last Visit

Over the three days following the survey month, the researcher pays a final visit to the household, with the aim to:

- Receive the daily supportive record of the last week.
- Receive the monthly supportive record of the household.
- Get data of expenditure on durable goods (Section VII) and income (Section III) of household members with incomes, during the year that ends by the end of the survey month.





## Household Expenditure Data Recording Rules

The following rules were taken into consideration while completing data:

- The expenditure of the household shall not include commodities or services purchased before the reference period.
- The expenditure shall be recorded according to the commodities and services purchased and acquired during the reference period, even if they are not used during this period.
- If a commodity is purchased on credit during the reference period, the commodity name and total price shall be recorded. However, in case that it was bought before the reference period, only the installment value paid during the reference period shall be recorded within the monthly expenditure list.
- In case that the household received presents, aids, or in kind donations in the form of commodities or services during the reference period, they shall be recorded within the household expenditure as if they were purchased. The quantities of the commodities and services shall be recorded, but the values shall be estimated according to their prices in markets.
- In case of using a commodity or material from the household's production, the consumed quantity during the reference period, the quantity unit and the market value, shall be recorded.
- Household expenditure does not include commodities or services used in productive purposes in enterprises owned by the household.
- Value of in-kind gifts presented by a household member to the others shall be recorded. In case that the present is produced by the household, its value shall be estimated according to its price in the market. It shall be recorded within the monthly expenditure of the household.



- Regular expenses such as those of electricity, water, and gas charges shall be recorded; whether or not they charges were repaid during the reference period, as long as they were consumed during the reference period.

### Household Data Completion and Recording Methods

Data concerning daily and monthly expenditure are completed through one of the following methods:

- **Recording by the household:**

The household records the daily expenditure as it makes purchases in the daily supportive record; i.e., records daily purchases one by one. Each commodity must be recorded in the dedicated page within its group.

Similarly, the household records its monthly expenditure on commodities and services in the monthly supportive record in the same manner used in recording the daily expenditure data.

- **Recording by the researcher:**

In case all household members are illiterate, the researcher shall visit the household each **three** days, ask about the daily and monthly expenditure of the household, and record the data in the respective supportive records.

#### **Dumbing the supportive records in the survey form:**

The researcher, during the survey period, after receiving the supportive daily and monthly records from families, and after carrying out the final review, dumbs the data from the basic form of household expenditure and income survey.



## Survey Findings Summary

First: **The average monthly expenditure and income of household and individual witnessed a remarkable increase over the period 2007-2013.**

The results of household expenditure and income survey of 1434 AH (2013), show that the monthly expenditure on commodities and services (consumer and non-consumer) groups on the level of the Kingdom reached SR 11522, whereas expenditure per capita amounted to SR 2216. The average expenditure of the Saudi household reached SR (15367), i.e. it increased by (16%) compared to 2007 and expenditure per capita reached SR (2554); an increase of (19.5%) compared to 2007.

The survey indicates that this increase exceeds the rise in the prices which affirms the improvement in the standard of living of the Saudi families. The results of the survey show that the actual expenditure of the Saudi household rose by (10%) over the period 2007-2013. Besides, expenditure average per capita rose by about (3%) in the same period.

The survey results also show that the monthly average income of the household on the level of the Kingdom amounted to SR (10723) and per capita reached SR (2062). The average income of the Saudi household reached SR (13610). It decreased by (3.4%) compared to 2007 and per capita reached SR (2262).

Second: **The average monthly expenditure and income of household and individual witnesses a remarkable increase over the period 2007-2013.**

The average monthly expenditure on commodities and (consumer and non-consumer) services on the level of the Kingdom reached SR 6930, whereas per capita expenditure reached SR 1455. The average expenditure of the Saudi household reached SR 9682. It increased by (19.5%) compared to 2007, and per capita reached SR 1682.

The median monthly household income on the level of the Kingdom reached SR 8000, and per capita reached SR 1619. The median income of the Saudi household reached SR 10723. It increased by (18.5%) compared to 2007. The median income per capita reached SR 1792.



**Table (1):** Key household and individual expenditure and income indicators of 2013 compared to 2007

Indicator	2007		2013	
	Saudi	Total	Saudi	Total
The average monthly general expenditure of the household *	13,251	10,280	15,367	11,522
The median monthly general expenditure of the household *	8,101	5,698	9,682	6,930
The average monthly general expenditure per capita *	2,138	1,805	2,554	2,216
The median monthly general expenditure per capita *	1,339	1,137	1,682	1,455
The average monthly general expenditure of the household	10,522	8,331	13,282	10,103
The average monthly consumer expenditure per capita	1,698	1,462	2,207	1,943
The average monthly income of the household	14,084	11,092	13,610	10,723
The median monthly income of the household	9,052	6,500	10,723	8,000
The average monthly income per capita	2,273	1,947	2,262	2,062
The median monthly income per capita	1,500	1,300	1,792	1,619
Percentage of household monthly expenditure on "food and beverages"	16.6%	17.4%	16.9%	17.9%
Gini indicator	51.3%		45.9%	
Household size average **	6.2	5.7	6.7	5.7

\* **The average or median general monthly expenditure of the household or per capita** includes the non-consumer expenditure such as expenditure on buying buildings, lands, installments of real estate loans, bridal money, borrowing, presents presented to others, and transfers for dependent persons and others.

\*\* **Household size average:** It is the average size of the household, i.e. an individual or a group of individuals who are or are not bound to one another with a kinship relationship, who share the housing unit and food, and who live in the housing unit at the survey time.



### Third: Household monthly expenditure average by main expenditure group

As shown in Table (2), the results show that, **housing, water, electricity, gas and other fuels** group represents the highest percentage of the (Saudi and non-Saudi) household monthly expenditure average as it reached (21.2%), followed by **miscellaneous personal commodities and services** group which reached (19.7%). The **tobacco** group occupies the lowest average of household monthly expenditure which reached (0.5%).

**Table (2):** Household monthly expenditure average and relative distribution by main expenditure group

Main Expenditure Group	Saudi household	%	Total	%
Food and beverages	2594	16.9	2065	17.9
Tobacco	37	0.2	54	0.5
Clothes, garments and footwear	889	5.8	649	5.6
Housing, Water, Electricity, Gas, and other Fuels:	3183	20.7	2439	21.2
Dwelling Furnishing and Equipment	1213	7.9	844	7.3
Health care Services	266	1.7	201	1.7
Transport	1515	9.9	1054	9.1
Telecommunications	919	6.0	726	6.3
Entertainment and Culture	444	2.9	320	2.8
Education	341	2.2	289	2.5
Restaurants and hotels services	715	4.7	613	5.3
Miscellaneous personal commodities and services	3251	21.2	2268	19.7
<b>Total</b>	<b>15367</b>	<b>100.0</b>	<b>11522</b>	<b>100.0</b>

Regarding Saudi families, the results show that the **miscellaneous personal commodities and services** group represents the highest proportion of the monthly expenditure average at a percentage of (21.2%). It is followed by **housing, water, electricity, gas, and other fuels** group



at a percentage of (20.7%). Concerning the lowest proportion of the average expenditure of the Saudi household, it is occupied by the **tobacco** group which reached (0.2%).

It is noteworthy that the percentage of expenditure on **housing, water, electricity, gas, and other fuels** is higher than the percentage of expenditure on **food and beverages**. This is a new development compared to the case in 2007.

#### Fourth: Household monthly expenditure average by administrative region

As shown in Table (3), al-Baha region represents the highest average of monthly expenditure of (Saudi and non-Saudi) household on the administrative regions levels, as it amounted to SR 14322. It is followed by the Eastern Region by an average of SR 13161. Najran represents the lowest monthly household expenditure by administrative regions, which amounted to SR 7512.

**Table (3):** Household monthly expenditure average and size average by administrative region

Administrative region	Saudi household		Total	
	Expenditure average	Household size average	Expenditure average	Household size average
Riyadh	18470	6.9	12883	5.7
Makkah	12649	5.8	9664	5.2
Madinah	16407	6.4	11449	5.6
Al-Qassim	14560	7.3	9884	5.8
Eastern Region	16936	7.2	13161	6.3
Asir	15611	6.6	13029	5.6
Tabuk	14158	6.8	11766	6.0
Ha'il	14832	7.6	10311	6.2
Northern Borders	14054	8.6	11968	7.3
Jazan	12093	7.6	10455	6.7
Najran	9645	7.1	7512	5.8
Al-Bahah	16053	6.3	14322	5.2
Al-Jawf	13009	6.9	10063	5.7
Total	15367	6.7	11522	5.7



Concerning the Saudi household, Riyadh Region records the highest monthly expenditure average as it reaches SR. (18470), followed by the Eastern Region by an average of SR. (16936). The lowest monthly expenditure average of the Saudi household is recorded in Najran Region which reaches SR. (9645).

Fifth: **Household monthly consumer expenditure average by administrative region**

As shown in Table (4), al-Baha region represents the highest average of monthly expenditure of (Saudi and non-Saudi) household on the administrative regions levels, as it amounts to SR 12128. It is followed by the Eastern Region by an average of SR 11717. On the other hand, Najran represents the lowest monthly household expenditure by administrative regions, which amounts to SR 6480.

**Table (4): Household monthly consumer expenditure average and size average by administrative region**

Administrative region	Saudi household		Total	
	Expenditure average	Household size average	Expenditure average	Household size average
Riyadh	14397	6.9	10542	5.7
Makkah	11470	5.8	8901	5.2
Madinah	15475	6.4	10858	5.6
Al-Qassim	13469	7.3	9000	5.8
Eastern Region	15357	7.2	11717	6.3
Assir	13004	6.6	11020	5.6
Tabuk	13258	6.8	11055	6.0
Ha'il	13160	7.6	9178	6.2
Northern Border	13069	8.6	11187	7.3
Jazan	10298	7.6	8950	6.7
Najran	8400	7.1	6480	5.8
Al-Bahah	13411	6.3	12128	5.2
Al-Jawf	11463	6.9	8906	5.7
Total	13282	6.7	10103	5.7



Concerning the Saudi household, al-Madinah Region records the highest monthly consumer expenditure average, amounting to SR 15475. It is followed by the Eastern Region, at an average of SR 15357. The lowest monthly consumer expenditure average of the Saudi household is recorded in Najran Region: SR 8400.

Sixth: Household monthly income average by administrative region

Table (5) shows the highest (Saudi or non-Saudi) household monthly income average on the level of administrative regions is recorded in al-Baha which reaches SR 13395. It is followed by the Eastern Region SR 13227. The lowest household monthly income average is recorded in al-Jawf which amounts to SR 8922.

Table (5): Household monthly income average and size average by administrative region

Administrative region	Saudi household		Total	
	Income average	Household size average	Income average	Household size average
Riyadh	14073	6.9	10686	5.7
Makkah	13106	5.8	10121	5.2
Madinah	11428	6.4	8907	5.6
Al-Qassim	13047	7.3	9280	5.8
Eastern Region	16605	7.2	13227	6.3
Asir	12651	6.6	10886	5.6
Tabuk	11775	6.8	10488	6.0
Ha'il	14818	7.6	10687	6.2
Northern Border	12985	8.6	11507	7.3
Jazan	11685	7.6	10507	6.7
Najran	12832	7.1	10121	5.8
Al-Bahah	14976	6.3	13395	5.2
Al-Jawf	11084	6.9	8922	5.7
Total	13610	6.7	10723	5.7





Regarding the Saudi household, the highest monthly income average is recorded in the Eastern Region which reaches SR 16605, followed by al-Baha Region SR 14976. The lowest Saudi household monthly income average is recorded in al-Jawf Region as it reaches SR 11084.

Seventh: Household monthly expenditure average by main expenditure group

As shown in Table (6), the results show that **housing, water, electricity, gas and other fuels** group represents the highest percentage of the (Saudi and non-Saudi) household monthly expenditure average as it reaches (21.2%). It is followed by **miscellaneous personal commodities and services** group which reaches (19.7%). The **tobacco** group occupies the lowest average of household monthly expenditure which reaches (0.5%).

**Table (6):** Individual monthly expenditure average and relative distribution by main expenditure group

Main Expenditure Group	Saudi individual	%	Total	%
Food and beverages	431	16.9	397	17.9
Tobacco	6	0.2	10	0.5
Clothes, garments and footwear	148	5.8	125	5.6
Housing, Water, Electricity, Gas, and other Fuel	529	20.7	469	21.2
Dwelling Furnishing and Equipment	202	7.9	162	7.3
Health care Services	44	1.7	39	1.7
Transport	252	9.9	203	9.1
Telecommunications	153	6.0	140	6.3
Entertainment and Culture	73	2.8	62	2.8
Education	57	2.2	56	2.5
Restaurants and hotels services	119	4.7	118	5.3
Miscellaneous personal commodities and services	540	21.2	436	19.7
<b>Total</b>	<b>2554</b>	<b>100.0</b>	<b>2216</b>	<b>100.0</b>



Regarding Saudi individual, the results show that the **miscellaneous personal commodities and services** group represents the highest proportion of the monthly expenditure average at a percentage of (21.2%). It is followed by **housing, water, electricity, gas, and other fuels** group at a percentage of (20.7%). Concerning the lowest proportion of the average expenditure of the Saudi household, it is occupied by the **tobacco** group which reaches (0.2%).

**Table (7):** The evolution of individual expenditure relative distribution by main expenditure group over the period 2007-2013

Main Expenditure Group	Saudi individual		Total	
	2007	2013	2007	2013
Food and beverages	16.6	16.9	17.4	17.9
Tobacco	0.3	0.2	0.4	0.5
Clothes, garments and footwear	6.9	5.8	6.7	5.6
Housing, Water, Electricity, Gas, and other Fuels	16.1	20.7	17	21.2
Dwelling Furnishing and Equipment	7.6	7.9	7.3	7.3
Health care Services	2.1	1.7	2	1.7
Transport	8.5	9.9	8.3	9.1
Telecommunications	6.2	6.0	6.5	6.3
Entertainment and Culture	2.9	2.8	2.9	2.7
Education	2.4	2.2	2.4	2.5
Restaurants and hotels services	4.5	4.7	4.7	5.3
Miscellaneous personal commodities and services	26	21.2	24.4	19.7
<b>Total</b>	100.0	100.0	100.0	100.0

As shown in Table (7), the results show that the percentage of monthly (Saudi and non-Saudi) expenditure per capita on the **housing, water, electricity, and other fuels** group witnessed an increase during 2013, as it reached (21.2). The **miscellaneous personal commodities and**



**services** group reached (19.7%) during the same period, as the individual dedicates one fifth of his expenditure to this group.

It is worth noting that there is a mild rise in the individual expenditure on **transport and restaurants and hotels services**. This shows the change of life pattern of the Saudi citizen.

Eighth: **Individual monthly expenditure average by administrative region**

As shown in Table (8), Riyadh Region represents the highest average of monthly expenditure of (Saudi and non-Saudi) individual on the administrative regions levels, as it amounts to SR 2715. It is followed by al-Baha Region at an average of SR 2521. Najran represents the lowest monthly individual expenditure by administrative regions, which amounts to SR 1489.

**Table (8): Individual monthly expenditure average by administrative region**

Administrative region	Saudi individual	Total
Riyadh	3256	2715
Makkah	2362	1923
Madinah	2722	2175
Al-Qassim	2045	1912
Eastern Region	2616	2335
Asir	2717	2486
Tabuk	2296	2127
Ha'il	2041	1930
Northern Borders	2011	1905
Jazan	1717	1608
Najran	1588	1489
Al-Bahah	2753	2521
Al-Jawf	1844	1780
Total	2554	2216



Concerning the Saudi individual, Riyadh Region records the highest monthly expenditure average as it reaches SR 3256. It is followed by al-Baha Region by an average of SR 2753. The lowest monthly expenditure average of the Saudi individual is recorded in Najran Region which reaches SR 1588.

Ninth: **Individual monthly income average by administrative region**

Table (9) shows that the highest (Saudi or non-Saudi) monthly income average per capita on the level of administrative regions is recorded in al-Baha which reaches SR 2357. It is followed by the Eastern Region SR 2346. The lowest monthly income average per capita is recorded in al-Jawf which amounts to SR 1578.

**Table (9): Individual monthly income average by administrative region**

<b>Administrative region</b>	<b>Saudi individual</b>	<b>Total</b>
Riyadh	2481	2252
Makkah	2447	2014
Madinah	1896	1692
Al-Qassim	1833	1795
Eastern Region	2565	2346
Asir	2202	2077
Tabuk	1909	1896
Ha'il	2039	2001
Northern Borders	1858	1832
Jazan	1659	1616
Najran	2113	2006
Al-Bahah	2569	2357
Al-Jawf	1571	1578
Total	2262	2062



Regarding the Saudi individual, the highest monthly income average is recorded in al-Baha Region which reaches SR [2569](#). It is followed by the Eastern Region SR [2565](#). The lowest Saudi monthly income average per capita is recorded in al-Jawf Region as it reaches SR [1571](#).



# Tables

Table ( 1 )

جدول ( ١ )

سكان مجتمع المسح حسب المنطقة الإدارية والجنس  
Population by Administrative Area and Sex

Administrative Area	الجملة			سعودي			المنطقة الإدارية
	الجملة Total	أنثى Female	ذكر Male	الجملة Total	أنثى Female	ذكر Male	
Riyadh	6,903,920	3,057,511	3,846,409	4,339,595	2,104,619	2,234,976	الرياض
Makkah	7,092,377	3,193,206	3,899,171	3,797,638	1,861,574	1,936,064	مكة المكرمة
Madinah	2,001,998	890,484	1,111,514	1,331,574	625,353	706,221	المدينة المنورة
Qassim	1,404,303	612,490	791,813	1,127,616	531,030	596,586	القصيم
Easte. Prov.	4,564,548	1,920,177	2,644,371	3,134,462	1,498,466	1,635,996	الشرقية
Asir	1,801,967	830,414	971,553	1,470,181	723,554	746,627	عسير
Tabuk	885,025	413,113	471,912	729,816	352,132	377,684	تبوك
Hail	698,019	308,587	389,432	559,757	265,044	294,713	حائل
North.Bord.	376,296	178,808	197,488	318,012	152,068	165,944	الحدود الشمالية
Jazan	1,626,002	759,827	866,175	1,324,042	647,334	676,708	جازان
Najran	535,754	239,354	296,400	419,569	203,366	216,203	نجران
AL - Baha	395,818	197,473	198,345	319,979	160,041	159,938	الباحة
AL - Jouf	540,016	251,348	288,668	451,185	225,719	225,466	الجوف
Total	28,826,043	12,852,792	15,973,251	19,323,426	9,350,300	9,973,126	الجملة

الأسر حسب المنطقة الإدارية وجنسية وجنس رئيس الأسرة  
Households by Administrative Area, Nationality and Sex of Household Head

Administrative Area	Nationality & Sex of Household Head جنسية وجنس رئيس الأسرة						المنطقة الإدارية
	Total الجملة			Saudi سعودي			
	الجملة Total	أنثى Female	ذكر Male	الجملة Total	أنثى Female	ذكر Male	
Riyadh	1,455,157	37,899	1,417,258	794,625	36,653	757,972	الرياض
Makkah	1,411,290	72,914	1,338,376	748,332	58,061	690,271	مكة المكرمة
Madinah	380,346	25,960	354,386	232,324	23,580	208,744	المدينة المنورة
Qassim	271,621	5,292	266,329	162,293	5,097	157,196	القصيم
Easte. Prov.	809,727	14,379	795,348	509,996	13,817	496,179	المنطقة الشرقية
Asir	343,824	5,657	338,167	261,200	5,657	255,543	عسير
Tabuk	159,973	2,422	157,551	123,588	2,105	121,483	تبوك
Hail	130,687	853	129,834	82,497	853	81,644	حائل
North.Bord.	59,894	1,391	58,503	47,256	1,391	45,865	الحدود الشمالية
Jazan	250,030	13,246	236,784	191,499	12,497	179,002	جازان
Najran	106,177	6,517	99,660	71,507	6,278	65,229	نجران
AL - Baha	69,664	682	68,982	56,421	682	55,739	الباحة
AL - Jouf	95,491	2,800	92,691	65,321	2,594	62,727	الجوف
Total	5,543,881	190,012	5,353,869	3,346,859	169,265	3,177,594	الجملة



## متوسط إنفاق الأسرة الشهري حسب مجموعة الإنفاق الرئيسية وجنسية وجنس رئيس الأسرة

## Average Monthly Household Expenditure by Major Expenditure Group, Nationality and Sex of Household Head

Major Expenditure Group	جنسية وجنس رئيس الأسرة Nationality & Sex of Household Head						مجموعة الإنفاق الرئيسية
	جملة الأسر Total of Households			الأسرة السعودية Saudi Household			
	الجملة Total	أنثى Female	ذكر Male	الجملة Total	أنثى Female	ذكر Male	
Food And Beverages	2065	1733	2077	2594	1766	2638	الأغذية والمشروبات
Tobacco	54	14	55	37	13	38	التبغ
Fabric, Apparel and Footwear	649	342	660	889	343	918	الأقمشة والملابس والأحذية
Housing, Water, Electricity, Gas, and other Fuels	2439	2070	2453	3183	2161	3237	السكن والمياه والكهرباء والغاز ووقود أخرى
Furniture and Furnishings	844	565	854	1213	572	1247	تأثيث وتجهيزات المنزل
Health Care Services	201	115	204	266	121	273	خدمات الرعاية الصحية
Transport	1054	314	1081	1515	318	1578	النقل
Communications	726	436	736	919	444	945	الاتصالات
Recreation and Culture	320	72	329	444	75	464	الترفيه والثقافة
Education	289	231	292	341	231	347	التعليم
Restaurants and Hotels	613	318	624	715	318	736	خدمات المطاعم والفنادق
Miscellaneous Personal Goods and Services	2268	2694	2253	3251	2976	3265	السلع والخدمات الشخصية المتنوعة
Total	11522	8905	11615	15367	9339	15688	الجملة

Table ( 4 )

جدول ( ٤ )

## متوسط إنفاق الأسرة الشهري حسب مجموعة الإنفاق الرئيسة بمنطقة الرياض

## Average Monthly Household Expenditure by Major Expenditure Group for Riyadh Area

Major Expenditure Group	جملة الأسر Total of Households	الأسرة السعودية Saudi Household	مجموعة الإنفاق الرئيسة
Food And Beverages	1892	2506	الأغذية والمشروبات
Tobacco	63	44	التبغ
Fabric, Apparel and Footwear	677	982	الأقمشة والملابس والأحذية
Housing, Water, Electricity, Gas, and other Fuels	2457	3380	السكن والمياه والكهرباء والغاز ووقود أخرى
Furniture and Furnishings	1058	1636	تأثيث وتجهيزات المنزل
Health Care Services	333	497	خدمات الرعاية الصحية
Transport	1226	1842	النقل
Communications	786	1024	الإتصالات
Recreation and Culture	400	591	الترفيه والثقافة
Education	447	542	التعليم
Restaurants and Hotels	648	700	خدمات المطاعم والفنادق
Miscellaneous Personal Goods and Services	2895	4726	السلع والخدمات الشخصية المتنوعة
Total	12883	18470	الجملة

Table ( 5 )

جدول ( ٥ )

## متوسط إنفاق الأسرة الشهري حسب مجموعة الإنفاق الرئيسية بمنطقة مكة المكرمة

## Average Monthly Household Expenditure by Major Expenditure Group for Makkah Area

Major Expenditure Group	جملة الأسر Total of Households	الأسرة السعودية Saudi Household	مجموعة الإنفاق الرئيسية
Food And Beverages	2045	2442	الأغذية والمشروبات
Tobacco	53	40	التبغ
Fabric, Apparel and Footwear	475	614	الأقمشة والملابس والأحذية
Housing, Water, Electricity, Gas, and other Fuels	2090	2681	السكن والمياه والكهرباء والغاز ووقود أخرى
Furniture and Furnishings	660	926	تأثيث وتجهيزات المنزل
Health Care Services	172	205	خدمات الرعاية الصحية
Transport	747	1048	النقل
Communications	650	830	الإتصالات
Recreation and Culture	233	340	الترفيه والثقافة
Education	354	480	التعليم
Restaurants and Hotels	668	821	خدمات المطاعم والفنادق
Miscellaneous Personal Goods and Services	1517	2221	السلع والخدمات الشخصية المتنوعة
Total	9664	12649	الجملة

Table ( 6 )

جدول ( ٦ )

## متوسط إنفاق الأسرة الشهري حسب مجموعة الإنفاق الرئيسة بمنطقة المدينة المنورة

## Average Monthly Household Expenditure by Major Expenditure Group for Madinah Area

Major Expenditure Group	جملة الأسر Total of Households	الأسرة السعودية Saudi Household	مجموعة الإنفاق الرئيسة
Food And Beverages	1686	2111	الأغذية والمشروبات
Tobacco	48	40	التبغ
Fabric, Apparel and Footwear	415	567	الأقمشة والملابس والأحذية
Housing, Water, Electricity, Gas, and other Fuels	2045	2637	السكن والمياه والكهرباء والغاز ووقود أخرى
Furniture and Furnishings	673	1028	تأثيث وتجهيزات المنزل
Health Care Services	105	138	خدمات الرعاية الصحية
Transport	1212	1882	النقل
Communications	499	627	الإتصالات
Recreation and Culture	201	242	الترفيه والثقافة
Education	40	42	التعليم
Restaurants and Hotels	423	526	خدمات المطاعم والفنادق
Miscellaneous Personal Goods and Services	4104	6567	السلع والخدمات الشخصية المتنوعة
Total	11449	16407	الجملة

Table ( 7 )

جدول ( ٧ )

## متوسط إنفاق الأسرة الشهري حسب مجموعة الإنفاق الرئيسة بمنطقة القصيم

## Average Monthly Household Expenditure by Major Expenditure Group for Qassim Area

Major Expenditure Group	جملة الأسر Total of Households	الأسرة السعودية Saudi Household	مجموعة الإنفاق الرئيسة
Food And Beverages	1857	2639	الأغذية والمشروبات
Tobacco	19	4	التبغ
Fabric, Apparel and Footwear	508	784	الأقمشة والملابس والأحذية
Housing, Water, Electricity, Gas, and other Fuels	2999	4444	السكن والمياه والكهرباء والغاز ووقود أخرى
Furniture and Furnishings	720	1164	تأثيث وتجهيزات المنزل
Health Care Services	145	230	خدمات الرعاية الصحية
Transport	1166	1905	النقل
Communications	653	950	الإتصالات
Recreation and Culture	160	258	الترفيه والثقافة
Education	48	71	التعليم
Restaurants and Hotels	386	513	خدمات المطاعم والفنادق
Miscellaneous Personal Goods and Services	1225	1597	السلع والخدمات الشخصية المتنوعة
Total	9884	14560	الجملة

Table ( 8 )

جدول ( ٨ )

## متوسط إنفاق الأسرة الشهري حسب مجموعة الإنفاق الرئيسية بالمنطقة الشرقية

## Average Monthly Household Expenditure by Major Expenditure Group for Easte.Prov. Area

Major Expenditure Group	جملة الأسر Total of Households	الأسرة السعودية Saudi Household	مجموعة الإنفاق الرئيسية
Food And Beverages	2289	2890	الأغذية والمشروبات
Tobacco	63	39	التبغ
Fabric, Apparel and Footwear	991	1372	الأقمشة والملابس والأحذية
Housing, Water, Electricity, Gas, and other Fuels	3009	3923	السكن والمياه والكهرباء والغاز ووقود أخرى
Furniture and Furnishings	906	1316	تأثيث وتجهيزات المنزل
Health Care Services	151	204	خدمات الرعاية الصحية
Transport	1014	1431	النقل
Communications	941	1195	الإتصالات
Recreation and Culture	417	588	الترفيه والثقافة
Education	375	457	التعليم
Restaurants and Hotels	773	938	خدمات المطاعم والفنادق
Miscellaneous Personal Goods and Services	2231	2583	السلع والخدمات الشخصية المتنوعة
Total	13161	16936	الجملة

Table ( 9 )

جدول ( ٩ )

## متوسط إنفاق الأسرة الشهري حسب مجموعة الإنفاق الرئيسية بمنطقة عسير

## Average Monthly Household Expenditure by Major Expenditure Group for Asir Area

Major Expenditure Group	جملة الأسر Total of Households	الأسرة السعودية Saudi Household	مجموعة الإنفاق الرئيسية
Food And Beverages	2691	3113	الأغذية والمشروبات
Tobacco	41	14	التبغ
Fabric, Apparel and Footwear	812	972	الأقمشة والملابس والأحذية
Housing, Water, Electricity, Gas, and other Fuels	2619	3086	السكن والمياه والكهرباء والغاز ووقود أخرى
Furniture and Furnishings	1247	1550	تأثيث وتجهيزات المنزل
Health Care Services	263	316	خدمات الرعاية الصحية
Transport	821	996	النقل
Communications	757	892	الإتصالات
Recreation and Culture	507	593	الترفيه والثقافة
Education	92	104	التعليم
Restaurants and Hotels	538	623	خدمات المطاعم والفنادق
Miscellaneous Personal Goods and Services	2643	3353	السلع والخدمات الشخصية المتنوعة
Total	13029	15611	الجملة

Table ( 10 )

جدول ( ١٠ )

## متوسط إنفاق الأسرة الشهري حسب مجموعة الإنفاق الرئيسة بمنطقة تبوك

## Average Monthly Household Expenditure by Major Expenditure Group for Tabuk Area

Major Expenditure Group	جملة الأسر Total of Households	الأسرة السعودية Saudi Household	مجموعة الإنفاق الرئيسة
Food And Beverages	2064	2397	الأغذية والمشروبات
Tobacco	52	49	التبغ
Fabric, Apparel and Footwear	591	704	الأقمشة والملابس والأحذية
Housing, Water, Electricity, Gas, and other Fuels	1985	2252	السكن والمياه والكهرباء والغاز ووقود أخرى
Furniture and Furnishings	650	799	تأثيث وتجهيزات المنزل
Health Care Services	52	59	خدمات الرعاية الصحية
Transport	3231	4140	النقل
Communications	687	776	الإتصالات
Recreation and Culture	281	335	الترفيه والثقافة
Education	139	144	التعليم
Restaurants and Hotels	442	504	خدمات المطاعم والفنادق
Miscellaneous Personal Goods and Services	1593	1999	السلع والخدمات الشخصية المتنوعة
Total	11766	14158	الجملة



Table ( 11 )

جدول ( ١١ )

## متوسط إنفاق الأسرة الشهري حسب مجموعة الإنفاق الرئيسة بمنطقة حائل

## Average Monthly Household Expenditure by Major Expenditure Group for Hail Area

Major Expenditure Group	جملة الأسر Total of Households	الأسرة السعودية Saudi Household	مجموعة الإنفاق الرئيسة
Food And Beverages	1796	2520	الأغذية والمشروبات
Tobacco	48	30	التبغ
Fabric, Apparel and Footwear	454	681	الأقمشة والملابس والأحذية
Housing, Water, Electricity, Gas, and other Fuels	2543	3518	السكن والمياه والكهرباء والغاز ووقود أخرى
Furniture and Furnishings	523	797	تأثيث وتجهيزات المنزل
Health Care Services	45	66	خدمات الرعاية الصحية
Transport	1610	2508	النقل
Communications	624	850	الإتصالات
Recreation and Culture	187	183	الترفيه والثقافة
Education	1	1	التعليم
Restaurants and Hotels	385	541	خدمات المطاعم والفنادق
Miscellaneous Personal Goods and Services	2094	3136	السلع والخدمات الشخصية المتنوعة
Total	10311	14832	الجملة

Table ( 12 )

جدول ( ١٢ )

## متوسط إنفاق الأسرة الشهري حسب مجموعة الإنفاق الرئيسية بمنطقة الحدود الشمالية

## Average Monthly Household Expenditure by Major Expenditure Group for North. Bord. Area

Major Expenditure Group	جملة الأسر Total of Households	الأسرة السعودية Saudi Household	مجموعة الإنفاق الرئيسية
Food And Beverages	2909	3308	الأغذية والمشروبات
Tobacco	58	62	التبغ
Fabric, Apparel and Footwear	1128	1361	الأقمشة والملابس والأحذية
Housing, Water, Electricity, Gas, and other Fuels	2395	2694	السكن والمياه والكهرباء والغاز ووقود أخرى
Furniture and Furnishings	1175	1456	تأثيث وتجهيزات المنزل
Health Care Services	160	199	خدمات الرعاية الصحية
Transport	725	880	النقل
Communications	936	1075	الإتصالات
Recreation and Culture	416	513	الترفيه والثقافة
Education	165	201	التعليم
Restaurants and Hotels	557	645	خدمات المطاعم والفنادق
Miscellaneous Personal Goods and Services	1344	1660	السلع والخدمات الشخصية المتنوعة
Total	11968	14054	الجملة

## متوسط إنفاق الأسرة الشهري حسب مجموعة الإنفاق الرئيسية بمنطقة جازان

## Average Monthly Household Expenditure by Major Expenditure Group for Jazan Area

Major Expenditure Group	جملة الأسر Total of Households	الأسرة السعودية Saudi Household	مجموعة الإنفاق الرئيسية
Food And Beverages	2101	2390	الأغذية والمشروبات
Tobacco	49	41	التبغ
Fabric, Apparel and Footwear	612	729	الأقمشة والملابس والأحذية
Housing, Water, Electricity, Gas, and other Fuels	2531	2927	السكن والمياه والكهرباء والغاز ووقود أخرى
Furniture and Furnishings	579	705	تأثيث وتجهيزات المنزل
Health Care Services	144	178	خدمات الرعاية الصحية
Transport	781	949	النقل
Communications	609	687	الإتصالات
Recreation and Culture	286	349	الترفيه والثقافة
Education	99	69	التعليم
Restaurants and Hotels	679	735	خدمات المطاعم والفنادق
Miscellaneous Personal Goods and Services	1985	2335	السلع والخدمات الشخصية المتنوعة
Total	10455	12093	الجملة

## متوسط إنفاق الأسرة الشهري حسب مجموعة الإنفاق الرئيسية بمنطقة نجران

## Average Monthly Household Expenditure by Major Expenditure Group for Najran Area

Major Expenditure Group	جملة الأسر Total of Households	الأسرة السعودية Saudi Household	مجموعة الإنفاق الرئيسية
Food And Beverages	1684	2156	الأغذية والمشروبات
Tobacco	62	32	التبغ
Fabric, Apparel and Footwear	374	511	الأقمشة والملابس والأحذية
Housing, Water, Electricity, Gas, and other Fuels	1920	2412	السكن والمياه والكهرباء والغاز ووقود أخرى
Furniture and Furnishings	344	473	تأثيث وتجهيزات المنزل
Health Care Services	39	50	خدمات الرعاية الصحية
Transport	628	881	النقل
Communications	500	639	الإتصالات
Recreation and Culture	202	291	الترفيه والثقافة
Education	19	27	التعليم
Restaurants and Hotels	264	335	خدمات المطاعم والفنادق
Miscellaneous Personal Goods and Services	1477	1839	السلع والخدمات الشخصية المتنوعة
Total	7512	9645	الجملة

## متوسط إنفاق الأسرة الشهري حسب مجموعة الإنفاق الرئيسية بمنطقة الباحة

## Average Monthly Household Expenditure by Major Expenditure Group for AL-Baha Area

Major Expenditure Group	جملة الأسر Total of Households	الأسرة السعودية Saudi Household	مجموعة الإنفاق الرئيسية
Food And Beverages	3449	3786	الأغذية والمشروبات
Tobacco	31	26	التبغ
Fabric, Apparel and Footwear	1131	1288	الأقمشة والملابس والأحذية
Housing, Water, Electricity, Gas, and other Fuels	2701	2985	السكن والمياه والكهرباء والغاز ووقود أخرى
Furniture and Furnishings	1357	1593	تأثيث وتجهيزات المنزل
Health Care Services	249	259	خدمات الرعاية الصحية
Transport	617	663	النقل
Communications	823	900	الإتصالات
Recreation and Culture	336	372	الترفيه والثقافة
Education	189	193	التعليم
Restaurants and Hotels	618	673	خدمات المطاعم والفنادق
Miscellaneous Personal Goods and Services	2821	3314	السلع والخدمات الشخصية المتنوعة
Total	14322	16053	الجملة

Table ( 16 )

جدول ( ١٦ )

## متوسط إنفاق الأسرة الشهري حسب مجموعة الإنفاق الرئيسية بمنطقة الجوف

## Average Monthly Household Expenditure by Major Expenditure Group for AL-Jouf Area

Major Expenditure Group	جملة الأسر Total of Households	الأسرة السعودية Saudi Household	مجموعة الإنفاق الرئيسية
Food And Beverages	2088	2631	الأغذية والمشروبات
Tobacco	49	35	التبغ
Fabric, Apparel and Footwear	748	1011	الأقمشة والملابس والأحذية
Housing, Water, Electricity, Gas, and other Fuels	2638	3418	السكن والمياه والكهرباء والغاز ووقود أخرى
Furniture and Furnishings	798	1084	تأثيث وتجهيزات المنزل
Health Care Services	119	160	خدمات الرعاية الصحية
Transport	511	670	النقل
Communications	655	834	الإتصالات
Recreation and Culture	240	316	الترفيه والثقافة
Education	197	235	التعليم
Restaurants and Hotels	440	559	خدمات المطاعم والفنادق
Miscellaneous Personal Goods and Services	1581	2057	السلع والخدمات الشخصية المتنوعة
Total	10063	13009	الجملة

**متوسط إنفاق الأسرة الشهري حسب مجموعة الإنفاق**  
Average Monthly Household Expenditure by Expenditure Group

Expenditure Group	جملة الأسر Total of households	الأسرة السعودية Saudi Household	مجموعة الإنفاق
<b>Food And Beverages</b>	<b>2065.0</b>	<b>2594.0</b>	<b>الأغذية والمشروبات</b>
Cereals and Cereal Products	267.5	328.1	الخبز و الحبوب
Meat and Poultry	595.2	794.9	اللحوم والدواجن
Fish and Crustaceans	132.4	160.0	السماك و طعام البحر
Dairy Products and Eggs	219.8	266.6	الحليب ومنتجاته والبيض
Oils and Fats	71.9	89.8	الزيوت والدهون
Fruits and Nuts	184.8	232.4	الفواكه والمكسرات
Vegetables	192.1	217.8	الخضار
Sugar, Jam, Honey, Chocolate and Confectionary	107.8	138.7	السكر والمربي والعسل والشكولاته والحلويات
Food Products n.e.c.	87.1	117.8	منتجات غذائية غير مصنفة في مكان آخر
Coffee, Tea and Cocoa	72.9	95.2	القهوة والشاي والكاكاو وما شابهها
Mineral Waters, Soft Drinks and Juices	133.1	152.8	المياه المعدنية والمرطبات والعصيرات
<b>Tobacco</b>	<b>54.0</b>	<b>37.0</b>	<b>التبغ</b>
Tobacco	53.8	37.0	التبغ
<b>Apparel and footwear</b>	<b>649.0</b>	<b>889.0</b>	<b>الملابس والأحذية</b>
Apparel Material	37.1	54.4	مواد الملابس
Ready-Made Clothes	450.1	613.8	الملابس الجاهزة
Others Clothes Material	5.3	6.9	مواد أخرى من الملابس واكسسوارات الملابس
Cleaning, Tailoring Charges	68.0	97.7	خياطة الملابس وتنظيفها
Shoes and Other Foot Wear	88.3	115.9	الأحذية وغيرها مما يلبس في القدم
Shoes Repair and Polish	0.1	0.2	تصليح وتلميع الأحذية

**متوسط إنفاق الأسرة الشهري حسب مجموعة الإنفاق**  
**Average Monthly Household Expenditure by Expenditure Group**

Expenditure Group	جملة الأسر Total of households	الأسرة السعودية Saudi Household	مجموعة الإنفاق
<b>Housing, Water, Electricity, Gas, and Other Fuels</b>	<b>2439.0</b>	<b>2183.0</b>	<b>السكن والمياه والكهرباء والغاز ووقود أخرى</b>
Monthly Rent for Housing	2061.3	2668.8	إيجار المسكن الشهري
Materials for the Maintenance of Housing	60.9	96.6	المواد اللازمة لأعمال ترميم وصيانة المسكن
Services Restoration, Maintenance of House	51.1	80.2	خدمات ترميم وصيانة المسكن
Water Supply	39.8	50.9	مصاريف المياه
Waste Collection and Disposal	0.5	0.7	جمع النفايات
Sanitation	14.7	19.3	الصرف الصحي
Electricity	182.7	231.3	الكهرباء
Gas	20.3	22.1	الغاز
Liquid Fuels	0.6	0.9	الوقود السائل
Solid Fuels	7.6	12.1	الوقود الصلب
<b>Furniture and Furnishings</b>	<b>844.0</b>	<b>1213.0</b>	<b>تأثيث وتجهيزات المنزل وصيانتها</b>
Furniture and Furnishings	346.4	509.3	الأثاث والفرش
Carpets and Other Floor Coverings	34.9	50.0	السجاد وأغطية أرضية أخرى
Household Textiles	63.9	86.0	المنسوجات المنزلية
Durable Household Equipment	54.0	73.9	الأجهزة المنزلية المعمرة
Small Electric Household Appliances	37.9	50.6	أجهزة منزلية كهربائية صغيرة
Repairs Home Appliances	18.0	23.4	إصلاح أجهزة منزلية
House Wares and Table Wares	42.7	57.5	أدوات منزلية وأدوات المائدة
Tools and Main Equipments	3.8	5.2	الأدوات والمعدات الرئيسية
Tools and Equipments of House and Garden	16.3	23.0	الأدوات والأجهزة للمنزل والحديقة



Continud table ( 17 )

تابع جدول ( ١٧ )

متوسط إنفاق الأسرة الشهري حسب مجموعة الإنفاق  
Average Monthly Household Expenditure by Expenditure Group

Expenditure Group	جملة الأسر Total of households	الأسرة السعودية Saudi Household	مجموعة الإنفاق
Minor Household Goods	81.8	102.0	سلع منزلية صغيرة
Domestic Services and household	147.0	235.7	الخدمات المنزلية والأسرية
<b>Health Care Services</b>	<b>201.0</b>	<b>266.0</b>	<b>خدمات الرعاية الصحية</b>
Pharmaceutical Products	35.2	41.8	المنتجات الصيدلانية
Other Medical Products	4.9	6.5	منتجات طبية أخرى
Therapeutic Appliances and Equipment	17.7	26.1	الأجهزة والمعدات العلاجية
Outpatient Medical Services	25.9	31.7	الخدمات الطبية
Outpatient Dental Services	61.0	92.0	خدمات طب الأسنان
Outpatient Paramedical Services	15.8	21.5	الخدمات شبه الطبية
Hospital Services	40.0	46.1	خدمات المستشفيات
<b>Transport</b>	<b>1054.0</b>	<b>1515.0</b>	<b>النقل</b>
Transport Equipment, Pursuances	547.1	851.2	وسائل النقل والمواصلات
Parts and accessories of Transport Equipment Testicular	112.3	165.3	قطع غيار واكسسوارات لمعدات النقل الشخصية
Fuel and Lubricants for Personal Transport Equipment	167.8	222.5	وقود وزيوت تشحيم لمعدات النقل الشخصية
Maintenance,Services of Transport Equipment	128.4	174.3	صيانة واصلاح معدات النقل الشخصية
Transportation Fees	93.7	94.9	خدمات النقل
<b>Communications</b>	<b>726.0</b>	<b>919.2</b>	<b>الاتصالات</b>
Mail Services	4.0	5.4	خدمات البريد
Communication Appliances	142.0	196.4	أجهزة الاتصالات
Communication Costs	579.5	717.4	خدمات الهاتف والفاكس

**متوسط إنفاق الأسرة الشهري حسب مجموعة الإنفاق**  
**Average Monthly Household Expenditure by Expenditure Group**

Expenditure Group	جملة الأسر Total of households	الأسرة السعودية Saudi Household	مجموعة الإنفاق
<b>Recreation and Culture</b>	<b>320.0</b>	<b>444.0</b>	<b>الترفيه والثقافة</b>
Audio-Visual, Photographic and Information Processing Equipment	14.2	18.8	المعدات اللازمة لاستقبال وتسجيل واستنساخ الصوت والصورة
Photographic and Information Processing Equipment	8.2	11.7	معدات التصوير الفوتوغرافي والسينمائي والأدوات البصرية
Word Processing Appliances	70.8	100.2	أجهزة معالجة البيانات
Recording Media	1.3	1.4	وسائل التسجيل
Repair, Audio-Visual, Photographic and Information Processing Equipment	4.0	5.3	اصلاح المعدات السمعية والبصرية ومعدات التصوير والمعلومات
Games, Toys and Hobbies	9.1	12.9	الالعاب والهوايات
Equipment for Sport, Camping and Open-Air Recreation	1.4	2.1	معدات الرياضة والتخييم والترفيه في الهواء الطلق
Gardens, Plants and Flowers	3.2	4.6	الحدائق والنباتات والزهور
Pets and Related Products	16.3	25.9	الحيوانات الأليفة والمنتجات المتصلة بها
Veterinary services and other services for pets	0.9	1.3	خدمات البيطرة والخدمات الأخرى للحيوانات الأليفة
Recreational And Sport Services	39.7	57.1	الخدمات الترفيهية والرياضية
Culture Services	7.1	10.2	الخدمات الثقافية
Stationery , Books and Newspapers	26.0	36.1	الكتب والصحف والقرطاسية
Package Holidays	115.5	153.5	عروض العطلات والسياحة
<b>Education</b>	<b>290.0</b>	<b>341.0</b>	<b>التعليم</b>
Education	289.5	340.7	التعليم

Completed table ( 17 )

تكملة جدول ( ١٧ )

متوسط إنفاق الأسرة الشهري حسب مجموعة الإنفاق  
Average Monthly Household Expenditure by Expenditure Group

Expenditure Group	جملة الأسر Total of households	الأسرة السعودية Saudi Household	مجموعة الإنفاق
<b>Restaurants and Hotels' Services</b>	<b>613.0</b>	<b>715.0</b>	<b>المطاعم والفنادق</b>
Restaurants, Cafes and the Like	458.2	496.0	المطاعم والمقاهي وما شابهها
Canteens and Cafeterias	100.2	142.2	المقاصف
Accommodation and Furnished Services	54.7	77.1	خدمات الفنادق والشقق المفروشه
<b>Miscellaneous Personal Goods and Services</b>	<b>2268.0</b>	<b>3251.0</b>	<b>السلع والخدمات الشخصية المتنوعة</b>
Personal Grooming Services	56.4	72.5	خدمات العناية بالمظهر الشخصي
Personal Care Electric Appliances / Equipments	6.2	8.2	الاجهزة الكهربائية الخاصة بالعناية الشخصية
Other Applicances, Products for Personal Care	157.8	204.4	أجهزة أخرى ومنتجات معدة للعناية الشخصية
Jewellery, Precious Watches & Antiquities (all)	384.3	620.4	المجوهرات والساعات بأنواعها والتحف الثمينة
Other Personal Effects	30.5	41.9	الأمثلة الشخصية الأخرى
Social Service	13.2	21.6	الخدمة الاجتماعية
Life Insurance	0.1	0.0	التأمين على الحياة
House Insurance	0.0	0.0	التأمين على المسكن
Health Insurance	9.1	2.5	التأمين على الصحة
Transport Insurance	12.0	14.4	التأمين المتصل بالنقل
Other Insurance (Travel, Luggage etc)	0.0	0.0	أنواع أخرى من التأمين (السفر، العفش...)
Banking Fees	6.3	2.2	الخدمات البنكية
Other Financial Services	1592.1	2262.7	خدمات أخرى غير مصنفة في مكان آخر
<b>Total Expenditure</b>	<b>11522.0</b>	<b>15367.0</b>	<b>جملة الإنفاق</b>

متوسط إنفاق الفرد الشهري حسب مجموعة الإنفاق  
Average Monthly Capita Expenditure by Expenditure Group

Expenditure Group	الجملة Total	الفرد السعودي Saudi Capita	مجموعة الإنفاق
<b>Food And Beverages</b>	<b>397.0</b>	<b>431.0</b>	<b>الأغذية والمشروبات</b>
Cereals and Cereal Products	51.4	54.5	الخبز و الحبوب
Meat and Poultry	114.5	132.1	اللحوم والدواجن
Fish and Crustaceans	25.5	26.6	السماك و طعام البحر
Dairy Products and Eggs	42.3	44.3	الحليب ومنتجاته والبيض
Oils and Fats	13.8	14.9	الزيوت والدهون
Fruits and Nuts	35.5	38.6	الفواكه والمكسرات
Vegetables	37.0	36.2	الخضار
Sugar, Jam, Honey, Chocolate and Confectionary	20.7	23.1	السكر والمربي والعسل والشكولاته والحلويات
Food Products n.e.c.	16.8	19.6	منتجات غذائية غير مصنفة في مكان آخر
Coffee, Tea and Cocoa	14.0	15.8	القهوة والشاي والكاكاو وما شابهها
Mineral Waters, Soft Drinks and Juices	25.6	25.4	المياه المعدنية والمرطبات والعصيرات
<b>Tobacco</b>	<b>10.0</b>	<b>6.0</b>	<b>التبغ</b>
Tobacco	10.4	6.2	التبغ
<b>Apparel and footwear</b>	<b>125.0</b>	<b>148.0</b>	<b>الملابس والأحذية</b>
Apparel Material	7.1	9.0	مواد الملابس
Ready-Made Clothes	86.6	102.0	الملابس الجاهزة
Others Clothes Material	1.0	1.1	مواد أخرى من الملابس واكسسوارات الملابس
Cleaning, Tailoring Charges	13.1	16.2	خياطة الملابس وتنظيفها
Shoes and Other Foot Wear	17.0	19.3	الأحذية وغيرها مما يلبس في القدم
Shoes Repair and Polish	0.0	0.0	تصليح وتلميع الأحذية

متوسط إنفاق الفرد الشهري حسب مجموعة الإنفاق  
Average Monthly Capita Expenditure by Expenditure Group

Expenditure Group	الجملة Total	الفرد السعودي Saudi Capita	مجموعة الإنفاق
<b>Housing, Water, Electricity, Gas, and Other Fuels</b>	<b>469.0</b>	<b>529.0</b>	<b>السكن والمياه والكهرباء والغاز ووقود أخرى</b>
Monthly Rent for Housing	396.4	443.5	إيجار المسكن الشهري
Materials for the Maintenance of Housing	11.7	16.1	المواد اللازمة لأعمال ترميم وصيانة المسكن
Services Restoration, Maintenance of House	9.8	13.3	خدمات ترميم وصيانة المسكن
Water Supply	7.7	8.5	مصاريف المياه
Waste Collection and Disposal	0.1	0.1	جمع النفايات
Sanitation	3.8	3.2	الصرف الصحي
Electricity	35.1	38.4	الكهرباء
Gas	3.9	3.7	الغاز
Liquid Fuels	0.1	0.2	الوقود السائل
Solid Fuels	1.5	2.0	الوقود الصلب
<b>Furniture and Furnishings</b>	<b>162.0</b>	<b>202.0</b>	<b>تأثيث وتجهيزات المنزل وصيانتها</b>
Furniture and Furnishings	66.6	84.6	الأثاث والفرش
Carpets and Other Floor Coverings	6.7	8.3	السجاد وأغطية أرضية أخرى
Household Textiles	12.3	14.3	المنسوجات المنزلية
Durable Household Equipment	10.4	12.3	الأجهزة المنزلية المعمرة
Small Electric Household Appliances	7.3	8.4	أجهزة منزلية كهربائية صغيرة
Repairs Home Appliances	3.5	3.9	إصلاح أجهزة منزلية
House Wares and Table Wares	8.2	9.6	أدوات منزلية وأدوات المائدة
Tools and Main Equipments	0.7	0.9	الأدوات والمعدات الرئيسية
Tools and Equipments of House and Garden	3.1	3.8	الأدوات والأجهزة للمنزل والحديقة

متوسط إنفاق الفرد الشهري حسب مجموعة الإنفاق  
Average Monthly Capita Expenditure by Expenditure Group

Expenditure Group	الجملة Total	الفرد السعودي Saudi Capita	مجموعة الإنفاق
Minor Household Goods	15.7	17.0	سلع منزلية صغيرة
Domestic Services and household	28.3	39.2	الخدمات المنزلية والأسرية
<b>Health Care Services</b>	<b>39.0</b>	<b>44.0</b>	<b>خدمات الرعاية الصحية</b>
Pharmaceutical Products	6.8	7.0	المنتجات الصيدلانية
Other Medical Products	0.9	1.1	منتجات طبية أخرى
Therapeutic Appliances and Equipment	3.4	4.3	الأجهزة والمعدات العلاجية
Outpatient Medical Services	5.0	5.3	الخدمات الطبية
Outpatient Dental Services	11.7	15.3	خدمات طب الأسنان
Outpatient Paramedical Services	3.0	3.6	الخدمات شبه الطبية
Hospital Services	7.7	7.7	خدمات المستشفيات
<b>Transport</b>	<b>203.0</b>	<b>252.0</b>	<b>النقل</b>
Transport Equipment, Pursuances	105.2	141.5	وسائل النقل والمواصلات
Parts and accessories of Transport Equipment Testicular	21.6	27.5	قطع غيار واكسسوارات لمعدات النقل الشخصية
Fuel and Lubricants for Personal Transport Equipment	32.3	37.0	وقود وزيوت تشحيم لمعدات النقل الشخصية
Maintenance, Services of Transport Equipment	24.7	29.0	صيانة واصلاح معدات النقل الشخصية
Transportation Fees	18.0	15.8	خدمات النقل
<b>Communications</b>	<b>140.0</b>	<b>153.0</b>	<b>الاتصالات</b>
Mail Services	0.8	0.9	خدمات البريد
Communication Appliances	27.3	32.7	أجهزة الاتصالات
Communication Costs	111.4	119.2	خدمات الهاتف والفاكس

**متوسط إنفاق الفرد الشهري حسب مجموعة الإنفاق**  
Average Monthly Capita Expenditure by Expenditure Group

Expenditure Group	الجملة Total	الفرد السعودي Saudi Capita	مجموعة الإنفاق
<b>Recreation and Culture</b>	<b>62.0</b>	<b>73.0</b>	<b>الترفيه والثقافة</b>
Audio-Visual, Photographic and Information Processing Equipment	2.7	3.1	المعدات اللازمة لاستقبال وتسجيل واستنساخ الصوت والصورة
Photographic and Information Processing Equipment	1.6	1.9	معدات التصوير الفوتوغرافي والسينمائي والأدوات البصرية
Word Processing Appliances	13.6	16.7	أجهزة معالجة البيانات
Recording Media	0.2	0.2	وسائل التسجيل
Repair, Audio-Visual, Photographic and Information Processing Equipment	19.0	0.9	اصلاح المعدات السمعية والبصرية ومعدات التصوير والمعلومات
Games, Toys and Hobbies	1.7	2.1	الالعاب والهوايات
Equipment for Sport, Camping and Open-Air Recreation	0.3	0.4	معدات الرياضة والتخييم والترفيه في الهواء الطلق
Gardens, Plants and Flowers	0.6	0.8	الحدائق والنباتات والزهور
Pets and Related Products	3.1	4.3	الحيوانات الأليفة والمنتجات المتصلة بها
Veterinary services and other services for pets	0.2	0.2	خدمات البيطرة والخدمات الأخرى للحيوانات الأليفة
Recreational And Sport Services	7.6	11.2	الخدمات الترفيهية والرياضية
Culture Services	1.4	1.7	الخدمات الثقافية
Stationery , Books and Newspapers	5.0	6.0	الكتب والصحف والقرطاسية
Package Holidays	22.2	25.5	عروض العطلات والسياحة
<b>Education</b>	<b>56.0</b>	<b>57.0</b>	<b>التعليم</b>
Education	55.7	54.6	التعليم

Completed table ( 18 )

تكملة جدول ( ١٨ )

متوسط إنفاق الفرد الشهري حسب مجموعة الإنفاق  
Average Monthly Capita Expenditure by Expenditure Group

Expenditure Group	الجملة Total	الفرد السعودي Saudi Capita	مجموعة الإنفاق
<b>Restaurants and Hotels' Services</b>	<b>118.0</b>	<b>119.0</b>	<b>المطاعم والفنادق</b>
Restaurants, Cafes and the Like	88.1	82.4	المطاعم والمقاهي وما شابهها
Canteens and Cafeterias	19.3	23.6	المقاصف
Accommodation and Furnished Services	10.5	12.8	خدمات الفنادق والشقق المفروشه
<b>Miscellaneous Personal Goods and Services</b>	<b>436.0</b>	<b>540.0</b>	<b>السلع والخدمات الشخصية المتنوعة</b>
Personal Grooming Services	10.9	12.1	خدمات العناية بالمظهر الشخصي
Personal Care Electric Appliances / Equipments	1.2	1.4	الاجهزة الكهربائية الخاصة بالعناية الشخصية
Other Applicances, Products for Personal Care	30.3	34.0	أجهزة أخرى ومنتجات معدة للعناية الشخصية
Jewellery, Precious Watches & Antiquities (all)	73.9	103.1	المجوهرات والساعات بأنواعها والتحف الثمينة
Other Personal Effects	5.9	7.0	الأمثلة الشخصية الأخرى
Social Service	2.5	3.6	الخدمة الاجتماعية
Life Insurance	0.0	0.0	التأمين على الحياة
House Insurance	0.0	0.0	التأمين على المسكن
Health Insurance	1.7	0.4	التأمين على الصحة
Transport Insurance	2.3	2.4	التأمين المتصل بالنقل
Other Insurance (Travel, Luggage etc)	0.0	0.0	أنواع أخرى من التأمين (السفر، العفش...)
Banking Fees	1.2	0.4	الخدمات البنكية
Other Financial Services	306.2	376.0	خدمات أخرى غير مصنفة في مكان آخر
<b>Total Expenditure</b>	<b>2216.0</b>	<b>2554.0</b>	<b>جملة الإنفاق</b>



Table ( 19 )

جدول ( ١٩ )

## متوسط إنفاق الأسرة السعودية الشهري حسب مجموعة الإنفاق الرئيسية ونوع المسكن

## Average Monthly Expenditure of Saudi Household by Major Expenditure Group and Type of Housing Unit

Major Expenditure Group	الجملة Total	أخرى Other	شقة Apartment	دور في فيلا أو منزل شعبي A Floor in a Villa or Traditional House	فيلا Villa	منزل شعبي Traditional House	مجموعة الإنفاق الرئيسية
Food And Beverages	2594	811	2568	2810	3422	2525	الأغذية والمشروبات
Tobacco	37	232	38	33	27	32	التبغ
Fabric, Apparel and Footwear	889	310	670	939	1311	628	الأقمشة والملابس والأحذية
Housing, Water, Electricity, Gas, and other Fuels	3183	711	1763	2614	6314	1596	السكن والمياه والكهرباء والغاز ووقود أخرى
Furniture and Furnishings	1213	96	703	1177	2129	650	تأثيث وتجهيزات المنزل
Health Care Services	266		251	311	451	145	خدمات الرعاية الصحية
Transport	1515	144	870	1584	3020	675	النقل
Communications	919	341	591	1019	1329	605	الاتصالات
Recreation and Culture	436	338	126	491	668	179	الترفيه والثقافة
Education	341		2082	404	566	114	التعليم
Restaurants and Hotels	715	713	696	729	946	536	خدمات المطاعم والفنادق
Miscellaneous Personal Goods and Services	3251	592	1585	4852	6096	1195	السلع والخدمات الشخصية المتنوعة
Total	15367	4289	11942	16965	26305	8881	الجملة

Table ( 20 )

جدول ( ٢٠ )

## متوسط إنفاق الأسرة السعودية الشهري حسب مجموعة الإنفاق الرئيسية ومساحة المسكن (بالمتر المربع)

Average Monthly Expenditure of Saudi Household by Major Expenditure Group and Area of housing Unit (in Meters Square)

Major Expenditure Group	الجملة Total	أكبر من More than 700	700-500	499-300	أقل من Less than 300	مجموعة الإنفاق الرئيسية
Food And Beverages	2594	3679	3369	3186	2244	الأغذية والمشروبات
Tobacco	37	22	34	24	42	التبغ
Fabric, Apparel and Footwear	889	1478	1182	1168	723	الأقمشة والملابس والأحذية
Housing, Water, Electricity, Gas, and other Fuels	3183	6852	6441	4100	2143	السكن والمياه والكهرباء والغاز ووقود أخرى
Furniture and Furnishings	1213	2355	2239	1389	910	تأثيث وتجهيزات المنزل
Health Care Services	266	680	320	280	205	خدمات الرعاية الصحية
Transport	1515	4151	2829	1611	1010	النقل
Communications	919	1606	1239	1060	767	الاتصالات
Recreation and Culture	444	728	618	488	379	الترفيه والثقافة
Education	341	634	545	514	244	التعليم
Restaurants and Hotels	715	1158	938	691	638	خدمات المطاعم والفنادق
Miscellaneous Personal Goods and Services	3251	8038	4534	3814	2391	السلع والخدمات الشخصية المتنوعة
Total	15367	31381	24289	18325	11698	الجملة

## متوسط إنفاق الأسرة السعودية الشهري حسب مجموعة الإنفاق الرئيسية ومادة بناء المسكن

## Average Monthly Expenditure of Saudi Household by Major Expenditure Group and Building Material

Major Expenditure Group	الجملة Total	أخرى Other	حجر Stone	طين Clay	بلوك/طوب Block / Brick	مسلح Concrete	مجموعة الإنفاق الرئيسية
Food And Beverages	2594	1227	3323	2947	2523	2617	الأغذية والمشروبات
Tobacco	37	103	128	32	32	38	التبغ
Fabric, Apparel and Footwear	889	281	304	1181	631	962	الأقمشة والملابس والأحذية
Housing, Water, Electricity, Gas, and other Fuels	3183	881	2080	1605	1604	3628	السكن والمياه والكهرباء والغاز ووقود أخرى
Furniture and Furnishings	1213	126	595	559	654	1372	تأثيث وتجهيزات المنزل
Health Care Services	266	1	86	82	152	298	خدمات الرعاية الصحية
Transport	1515	188	1554	1481	682	1749	النقل
Communications	919	168	525	782	605	1009	الإتصالات
Recreation and Culture	444	361	549	175	175	519	الترفيه والثقافة
Education	341				224	374	التعليم
Restaurants and Hotels	715	212	479	672	547	763	خدمات المطاعم والفنادق
Miscellaneous Personal Goods and Services	3251	286	458	409	1222	3825	السلع والخدمات الشخصية المتنوعة
Total	15367	3835	10080	9925	9050	17154	الجملة

## متوسط إنفاق الأسرة السعودية الشهري حسب مجموعة الإنفاق الرئيسية ونوع حيازة المسكن

## Average Expenditure Monthly of Saudi Household by Major Expenditure Group and Type of Tenure

Major Expenditure Group	الجملة Total	أخرى Other	مقدم من صاحب العمل Provided by Employer	إيجار Rented	ملك Owned	مجموعة الإنفاق الرئيسية
Food And Beverages	<b>2594</b>	1499	2533	2141	2889	الأغذية والمشروبات
Tobacco	<b>37</b>	19	40	51	29	التبغ
Fabric, Apparel and Footwear	<b>889</b>	464	1190	751	967	الأقمشة والملابس والأحذية
Housing, Water, Electricity, Gas, and other Fuels	<b>3183</b>	2669	3595	1990	3884	السكن والمياه والكهرباء والغاز ووقود أخرى
Furniture and Furnishings	<b>1213</b>	643	975	978	1375	تأثيث وتجهيزات المنزل
Health Care Services	<b>266</b>	140	143	237	290	خدمات الرعاية الصحية
Transport	<b>1515</b>	515	1983	1089	1769	النقل
Communications	<b>919</b>	757	1039	818	978	الاتصالات
Recreation and Culture	<b>444</b>	161	459	439	453	الترفيه والثقافة
Education	<b>341</b>	21	112	267	401	التعليم
Restaurants and Hotels	<b>715</b>	340	789	647	761	خدمات المطاعم والفنادق
Miscellaneous Personal Goods and Services	<b>3251</b>	880	5246	2601	3604	السلع والخدمات الشخصية المتنوعة
<b>Total</b>	<b>15367</b>	8109	18104	12009	17399	الجملة

## متوسط إنفاق الأسرة السعودية الشهري حسب مجموعة الإنفاق الرئيسية وحجم الأسرة

## Average Expenditure Monthly of Saudi Household by Major Expenditure Group and Household Size

Major Expenditure Group	الجملة Total	10+	9-7	6-4	3-2	1	مجموعة الإنفاق الرئيسية
Food And Beverages	<b>2594</b>	3779	3147	2569	1694	593	الأغذية والمشروبات
Tobacco	<b>37</b>	44	34	36	33	51	التبغ
Fabric, Apparel and Footwear	<b>889</b>	1345	1125	831	542	243	الأقمشة والملابس والأحذية
Housing, Water, Electricity, Gas, and other Fuels	<b>3183</b>	4336	3919	2930	2257	1576	السكن والمياه والكهرباء والغاز ووقود أخرى
Furniture and Furnishings	<b>1213</b>	2063	1524	964	799	642	تأثيث وتجهيزات المنزل
Health Care Services	<b>266</b>	508	273	269	174	38	خدمات الرعاية الصحية
Transport	<b>1515</b>	3042	1946	1208	726	514	النقل
Communications	<b>919</b>	1223	1127	873	670	347	الاتصالات
Recreation and Culture	<b>444</b>	466	549	430	382	170	الترفيه والثقافة
Education	<b>341</b>	375	585	295	94	70	التعليم
Restaurants and Hotels	<b>715</b>	970	949	629	442	371	خدمات المطاعم والفنادق
Miscellaneous Personal Goods and Services	<b>3251</b>	5948	3608	2998	2184	1019	السلع والخدمات الشخصية المتنوعة
Total	<b>15367</b>	24101	18787	14032	9997	5635	الجملة

Table ( 24 )

جدول ( ٢٤ )

## متوسط إنفاق الأسرة السعودية الشهري حسب مجموعة الإنفاق الرئيسية وعمر رئيس الأسرة

## Average Monthly Expenditure of Saudi Household by Major Expenditure Group and Age of Household Head

Major Expenditure Group	الجملة Total	65+	64-60	59-55	54-50	49-45	44-40	39-35	34-30	29-25	24-20	19-15	مجموعة الإنفاق الرئيسية
Food And Beverages	2594	2620	3043	3122	3009	2577	2781	2519	1994	1766	1595	1844	الأغذية والمشروبات
Tobacco	37	22	27	36	39	31	34	35	47	55	48	29	التبغ
Fabric, Apparel and Footwear	889	757	1144	1034	1116	959	931	749	721	636	510	714	الأقمشة والملابس والأحذية
Housing, Water, Electricity, Gas, and other Fuels	3183	3057	3784	4050	4163	3198	3447	2757	2324	2060	2189	1991	السكن والمياه والكهرباء والغاز ووقود أخرى
Furniture and Furnishings	1213	1055	1211	1861	1549	1340	1177	1053	942	810	595	1259	تأثيث وتجهيزات المنزل
Health Care Services	266	257	254	354	400	182	237	288	202	282	93	190	خدمات الرعاية الصحية
Transport	1515	1066	1551	2122	2080	1738	1398	1316	1111	985	2343	539	النقل
Communications	919	746	992	1201	1171	931	953	803	739	759	674	784	الاتصالات
Recreation and Culture	444	446	375	386	501	557	392	344	535	331	239	957	الترفيه والثقافة
Education	341	408	204	653	731	248	321	294	116	160	299	75	التعليم
Restaurants and Hotels	715	585	755	819	972	779	788	575	561	523	667	584	خدمات المطاعم والفنادق
Miscellaneous Personal Goods and Services	3251	3221	2101	5894	4740	3641	3470	2495	2010	2143	756	615	السلع والخدمات الشخصية المتنوعة
Total	15367	14239	15440	21532	20470	16183	15928	13227	11301	10508	10008	9580	الجملة

متوسط إنفاق الأسرة (السعودية وغير السعودية) الشهري حسب مجموعة الإنفاق الرئيسية وعمر رئيس الأسرة

## Average Monthly Household Expenditure ( Saudi &amp; Non-Saudi) by Major Expenditure Group and Age of Household Head

Major Expenditure Group	الجملة Total	65+	64-60	59-55	54-50	49-45	44-40	39-35	34-30	29-25	24-20	19-15	مجموعة الإنفاق الرئيسية
Food And Beverages	<b>2065</b>	2495	2780	2661	2462	1997	2074	1861	1582	1422	1312	1596	الأغذية والمشروبات
Tobacco	<b>54</b>	24	31	43	46	48	53	60	63	76	78	33	التبغ
Fabric, Apparel and Footwear	<b>649</b>	698	1021	831	841	659	635	512	507	446	359	621	الأقمشة والملابس والأحذية
Housing, Water, Electricity, Gas, and other Fuels	<b>2439</b>	2860	3344	3325	3114	2338	2442	2046	1855	1644	1699	1768	السكن والمياه والكهرباء والغاز ووقود أخرى
Furniture and Furnishings	<b>844</b>	954	1088	1420	1054	894	753	676	634	571	407	1010	تأثيث وتجهيزات المنزل
Health Care Services	<b>201</b>	244	235	273	314	142	160	183	157	217	70	165	خدمات الرعاية الصحية
Transport	<b>1054</b>	973	1412	1635	1454	1114	917	821	782	669	1460	455	النقل
Communications	<b>726</b>	718	893	1025	909	701	700	608	592	598	533	683	الاتصالات
Recreation and Culture	<b>320</b>	393	327	321	385	386	258	214	355	239	255	756	الترفيه والثقافة
Education	<b>289</b>	374	343	686	585	228	259	222	103	99	175	59	التعليم
Restaurants and Hotels	<b>613</b>	561	694	702	734	653	589	455	495	505	1375	583	خدمات المطاعم والفنادق
Miscellaneous Personal Goods and Services	<b>2268</b>	2903	1895	4409	3247	2440	2208	1598	1432	1545	664	710	السلع والخدمات الشخصية المتنوعة
<b>Total</b>	<b>11522</b>	13195	14062	17330	15145	11599	11049	9256	8557	8030	8385	8439	الجملة

Table ( 26 )

جدول ( ٢٦ )

## متوسط إنفاق الأسرة السعودية الشهري حسب مجموعة الإنفاق الرئيسية والحالة الزوجية لرئيس الأسرة

## Average Expenditure Monthly of Saudi Household by Major Expenditure Group and Marital Status for Household Head

Major Expenditure Group	الجملة Total	أرمل Widower	مطلق Divorced	متزوج Married	لم يتزوج أبداً Never Married	مجموعة الإنفاق الرئيسية
Food And Beverages	<b>2594</b>	1868	1504	2722	1558	الأغذية والمشروبات
Tobacco	<b>37</b>	22	29	35	67	التبغ
Fabric, Apparel and Footwear	<b>889</b>	471	385	940	553	الأقمشة والملابس والأحذية
Housing, Water, Electricity, Gas, and other Fuels	<b>3183</b>	2433	2291	3307	2158	السكن والمياه والكهرباء والغاز ووقود أخرى
Furniture and Furnishings	<b>1213</b>	664	433	1261	1056	تأثيث وتجهيزات المنزل
Health Care Services	<b>266</b>	149	127	278	203	خدمات الرعاية الصحية
Transport	<b>1515</b>	485	547	1563	1659	النقل
Communications	<b>919</b>	444	510	962	704	الإتصالات
Recreation and Culture	<b>444</b>	115	119	473	319	الترفيه والثقافة
Education	<b>341</b>	219	242	337	482	التعليم
Restaurants and Hotels	<b>715</b>	290	397	745	622	خدمات المطاعم والفنادق
Miscellaneous Personal Goods and Services	<b>3251</b>	4236	951	3385	1480	السلع والخدمات الشخصية المتنوعة
<b>Total</b>	<b>15367</b>	11395	7536	16009	10861	<b>الجملة</b>



## متوسط إنفاق الأسرة السعودية الشهري حسب مجموعة الإنفاق الرئيسية والحالة التعليمية لرئيس الأسرة

## Average Monthly Expenditure of Saudi Household by Major Expenditure Group and Educational Status for Household Head

Major Expenditure Group	الجملة Total	عليا Post Graduate	بكالوريوس او ليسانس Bachelor Degree	دبلوم دون الجامعي Pre-Univ. Diploma	ثانوي او مايعادله Secondary/ Equivalent	متوسط Intermediat e	إبتدائي Primary	يقرأ ويكتب Read & Write	أمي Illiterate	مجموعة الإنفاق الرئيسية
Food And Beverages	2594	3476	2641	2575	2424	2629	2765	2690	2515	الأغذية والمشروبات
Tobacco	37	16	30	35	44	41	45	29	24	التبغ
Fabric, Apparel and Footwear	889	1624	1014	992	820	889	902	763	613	الأقمشة والملابس والأحذية
Housing, Water, Electricity, Gas, and other Fuels	3183	5221	3761	3358	2897	3132	3041	3000	2443	السكن والمياه والكهرباء والغاز ووقود أخرى
Furniture and Furnishings	1213	3580	1610	1358	1064	1098	1218	673	624	تأثيث وتجهيزات المنزل
Health Care Services	266	496	425	217	222	269	231	128	131	خدمات الرعاية الصحية
Transport	1515	4108	2141	1888	1326	1562	967	722	893	النقل
Communications	919	1766	1148	1012	889	856	868	626	543	الإتصالات
Recreation and Culture	444	1510	746	417	406	315	283	217	192	الترفيه والثقافة
Education	341	2634	482	215	262	435	202	102	125	التعليم
Restaurants and Hotels	715	1520	920	881	673	628	615	451	473	خدمات المطاعم والفنادق
Miscellaneous Personal Goods and Services	3251	18605	4251	3369	2961	2954	1488	1328	2912	السلع والخدمات الشخصية المتنوعة
Total	15367	44556	19169	16317	13989	14808	12625	10729	11487	الجملة

## متوسط إنفاق الأسرة (السعودية وغير السعودية) الشهري حسب مجموعة الإنفاق الرئيسية والحالة التعليمية لرئيس الأسرة

## Average Monthly Household Expenditure ( Saudi &amp; Non-Saudi) by Major Expenditure Group and Educational Status for Household Head

Major Expenditure Group	الجملة Total	عليا Post Graduate	بكالوريوس او ليسانس Bachelor Degree	دبلوم دون الجامعي Pre-Univ. Diploma	ثانوي او مايعادله Secondary/ Equivalent	متوسط Intermediat e	إبتدائي Primary	يقرأ ويكتب Read & Write	أمي Illiterate	مجموعة الإنفاق الرئيسية
Food And Beverages	2065	2613	2166	2123	2070	1950	2025	1766	2131	الأغذية والمشروبات
Tobacco	54	28	46	50	59	61	58	64	41	التبغ
Fabric, Apparel and Footwear	649	1083	770	717	663	583	595	422	484	الأقمشة والملابس والأحذية
Housing, Water, Electricity, Gas, and other Fuels	2439	3320	2892	2568	2420	2263	2223	1856	2024	السكن والمياه والكهرباء والغاز ووقود أخرى
Furniture and Furnishings	844	1920	1127	899	830	699	792	384	480	تأثيث وتجهيزات المنزل
Health Care Services	201	314	302	181	188	198	152	104	102	خدمات الرعاية الصحية
Transport	1054	2195	1499	1255	1023	978	661	426	685	النقل
Communications	726	1196	912	814	756	622	632	437	477	الاتصالات
Recreation and Culture	320	959	526	303	327	196	185	119	152	الترفيه والثقافة
Education	289	1689	462	200	205	314	138	74	92	التعليم
Restaurants and Hotels	613	1151	730	681	613	525	614	383	431	خدمات المطاعم والفنادق
Miscellaneous Personal Goods and Services	2268	8110	2906	2327	2281	1993	1132	863	2246	السلع والخدمات الشخصية المتنوعة
Total	11522	24579	14338	12118	11433	10383	9207	6897	9346	الجملة

## متوسط إنفاق الأسرة السعودية الشهري حسب مجموعة الإنفاق الرئيسة وفئة الإنفاق الشهري

## Average Monthly Expenditure of Saudi Household by Major Expenditure Group and Monthly Expenditure Range

Major Expenditure Group	الجملة Total	25000+	15000- 24999	9000- 14999	3000- 8999	2000- 2999	1500- 1999	1000- 1499	اقل من Less than 1000	مجموعة الإنفاق الرئيسة
Food And Beverages	<b>2594</b>	4318	3733	2820	1694	632	495	439	305	الأغذية والمشروبات
Tobacco	<b>37</b>	50	40	43	30	23	4		42	التبغ
Fabric, Apparel and Footwear	<b>889</b>	2408	1448	810	341	69	76	26		الأقمشة والملابس والأحذية
Housing, Water, Electricity, Gas, and other Fuels	<b>3183</b>	6206	4349	3300	1956	1176	874	582	332	السكن والمياه والكهرباء والغاز ووقود أخرى
Furniture and Furnishings	<b>1213</b>	5366	1551	703	248	49	20	22	18	تأثيث وتجهيزات المنزل
Health Care Services	<b>266</b>	1253	319	134	49	28	16	26		خدمات الرعاية الصحية
Transport	<b>1515</b>	7152	1752	746	322	86	17	21		النقل
Communications	<b>919</b>	2082	1299	863	529	190	126	51	13	الإتصالات
Recreation and Culture	<b>444</b>	2074	627	205	67	12	5	3	26	الترفيه والثقافة
Education	<b>341</b>	2131	250	87	20					التعليم
Restaurants and Hotels	<b>715</b>	1873	1009	641	350	197	106	24	4	خدمات المطاعم والفنادق
Miscellaneous Personal Goods and Services	<b>3251</b>	18426	2411	1275	487	79	38	22	38	السلع والخدمات الشخصية المتنوعة
<b>Total</b>	<b>15367</b>	53338	18787	11625	6095	2542	1777	1215	779	<b>الجملة</b>

Table ( 30 )

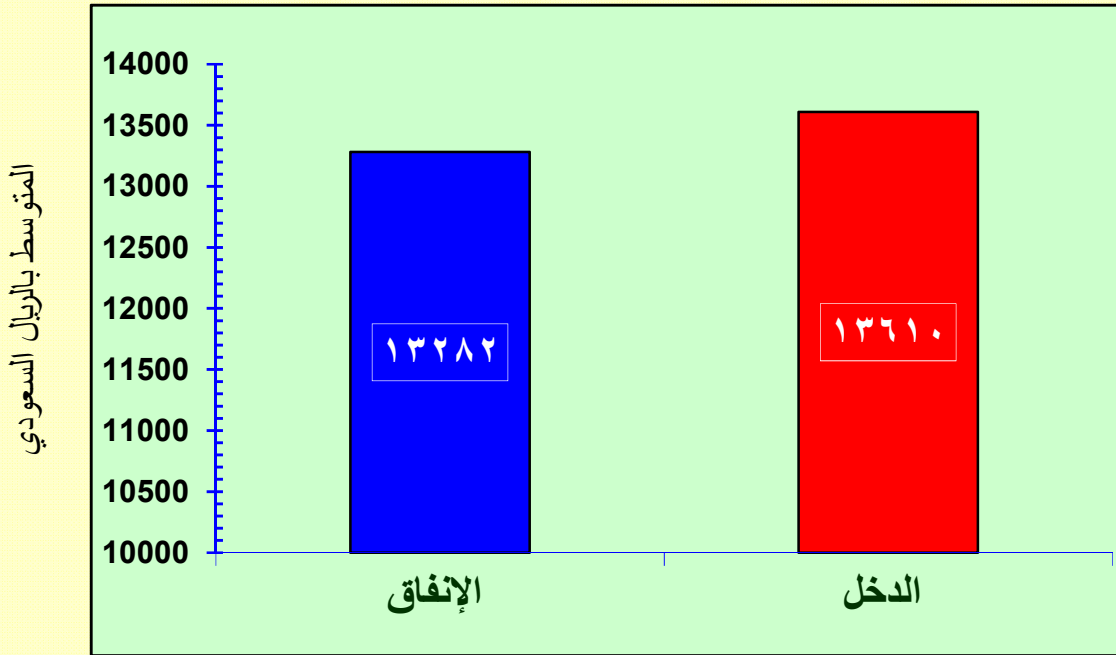
جدول ( ٣٠ )

متوسط إنفاق الأسرة (السعودية وغير السعودية) الشهري حسب مجموعة الإنفاق الرئيسة وفئة الإنفاق الشهري

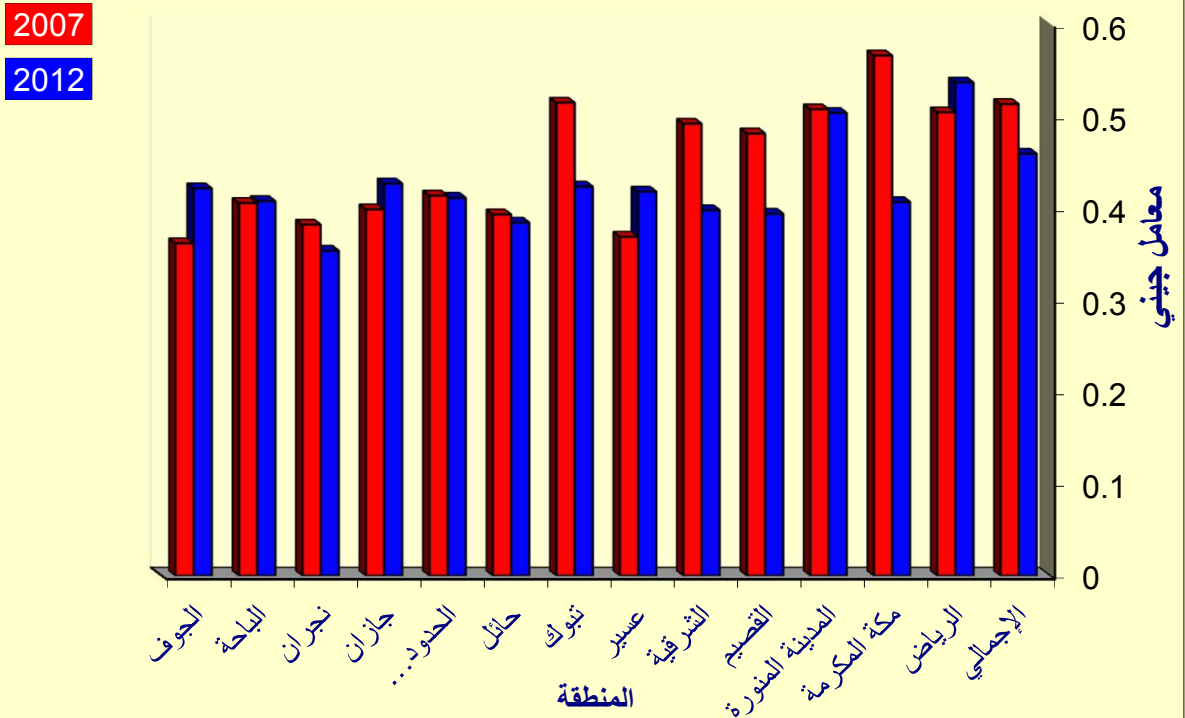
Average Monthly Household Expenditure ( Saudi &amp; Non-Saudi) by Major Expenditure Group and Monthly Expenditure Range

Major Expenditure Group	الجملة Total	25000+	15000- 24999	9000- 14999	3000- 8999	2000- 2999	1500- 1999	1000- 1499	اقل من Less than 1000	مجموعة الإنفاق الرئيسة
Food And Beverages	<b>2065</b>	4236	3637	2725	1558	625	434	359	301	الأغذية والمشروبات
Tobacco	<b>54</b>	61	54	58	54	57	33	42	19	التبغ
Fabric, Apparel and Footwear	<b>649</b>	2373	1416	794	299	67	43	25	9	الأقمشة والملابس والأحذية
Housing, Water, Electricity, Gas, and other Fuels	<b>2439</b>	5875	4109	3067	1716	997	781	553	309	السكن والمياه والكهرباء والغاز ووقود أخرى
Furniture and Furnishings	<b>844</b>	5226	1573	686	215	51	27	23	13	تأثيث وتجهيزات المنزل
Health Care Services	<b>201</b>	1262	363	152	53	17	7	7	3	خدمات الرعاية الصحية
Transport	<b>1054</b>	6793	1805	776	289	78	37	19	10	النقل
Communications	<b>726</b>	2041	1295	867	487	202	131	92	66	الإتصالات
Recreation and Culture	<b>320</b>	2055	696	219	64	7	3	1	2	الترفيه والثقافة
Education	<b>289</b>	2421	388	154	33	1				التعليم
Restaurants and Hotels	<b>613</b>	2174	1020	660	361	235	173	88	41	خدمات المطاعم والفنادق
Miscellaneous Personal Goods and Services	<b>2268</b>	17619	2464	1392	526	194	90	44	30	السلع والخدمات الشخصية المتنوعة
<b>Total</b>	<b>11522</b>	52137	18820	11550	5656	2532	1759	1253	804	الجملة

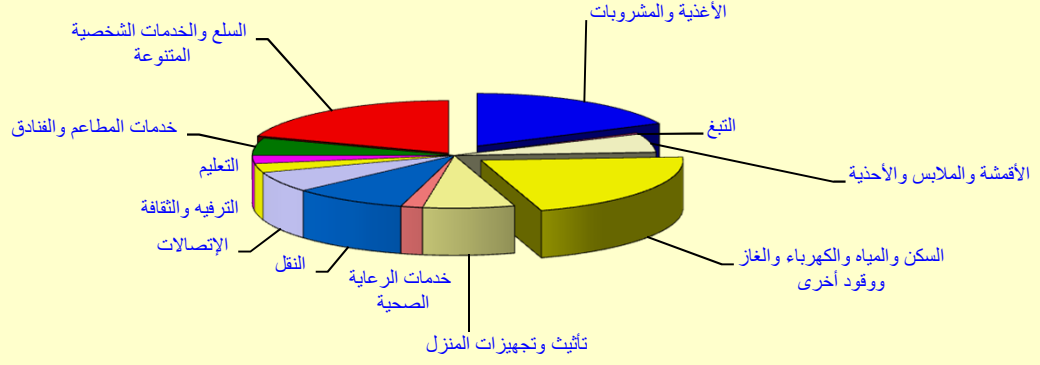
شكل (١) : متوسط الإنفاق الإستهلاكي للأسرة السعودية ومتوسط دخلها الشهري



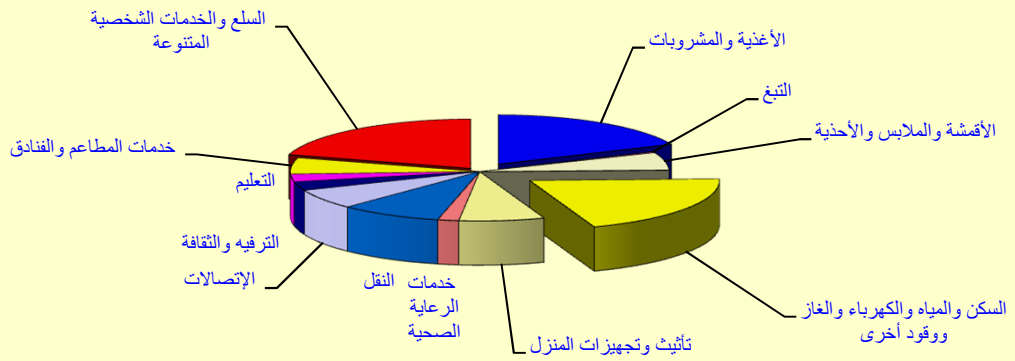
شكل ٢ : معامل جيني لإنفاق الأسرة السعودية الشهري حسب المنطقة الإدارية الرئيسة



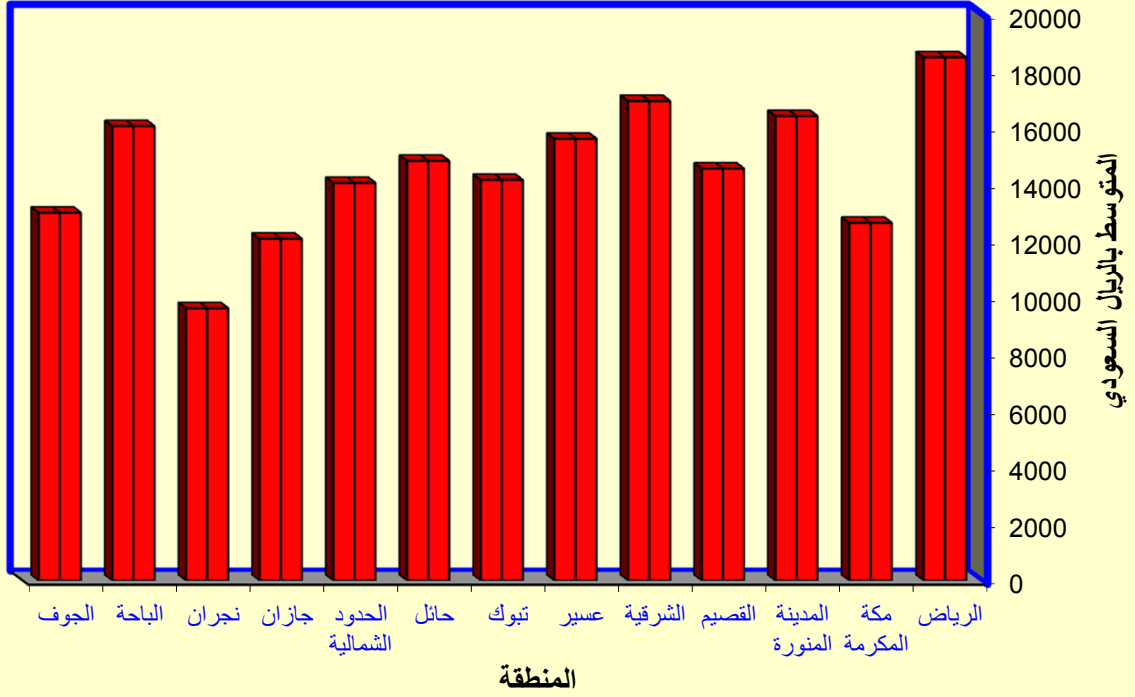
شكل (٣) : متوسط إنفاق الأسرة السعودية الشهري حسب مجموعة الإنفاق الرئيسية



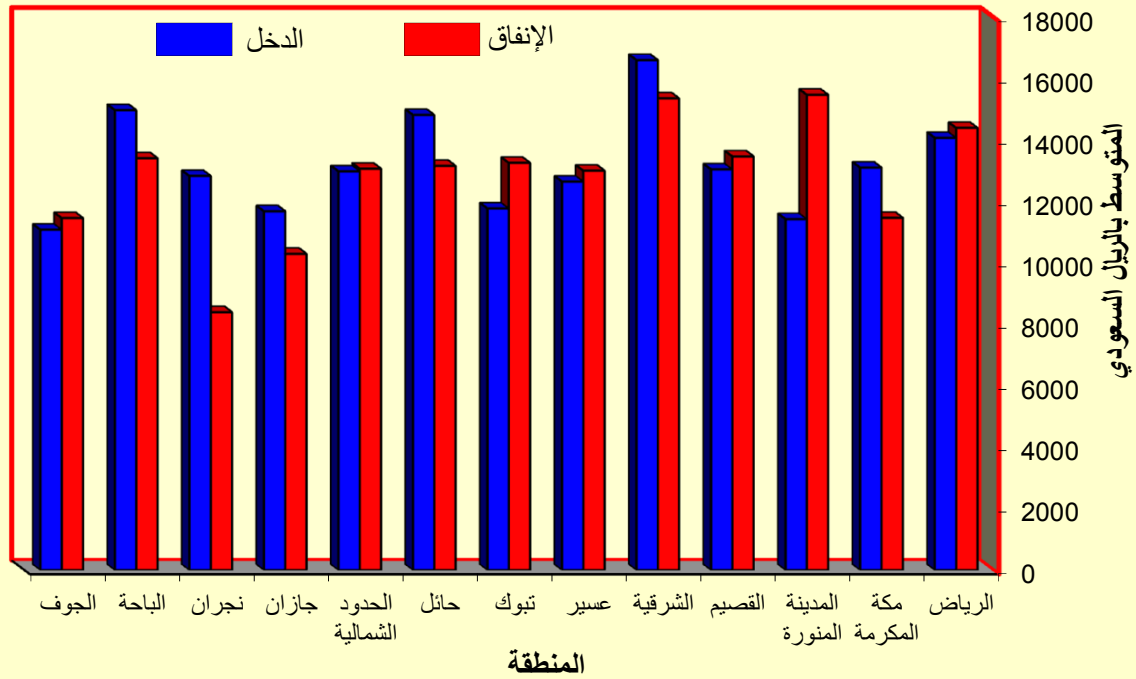
شكل (٤) : متوسط إنفاق الأسرة (السعودية وغير السعودية) الشهري حسب مجموعة الإنفاق



شكل (٥) : متوسط إنفاق الأسرة السعودية الشهري حسب المنطقة الإدارية الرئيسة



شكل (٦) : متوسط إنفاق الأسرة السعودية الإستهلاكي الشهري ودخلها الشهري حسب المنطقة





مركز الإحصاءات العامة  
Central Department of Statistics & Information

[www.cdsi.gov.sa](http://www.cdsi.gov.sa)

[info@cds.gov.sa](mailto:info@cds.gov.sa)

ص.ب ٣٧٣٥ الرياض ١١٤٨١

هاتف : ٤٠١٤١٣٨

فاكس : ٤٠٥٩٤٩٣